



PHASE 2

PHASE 1



PROJECT: RESIDENTIAL TOWER (N4-11)

Scale: N.T.S

Drawn by: Razzan

Checked by:

Date: 13th August 2020

Remarks:

DRAWING: LOCATION MAP



HOUSING  
DEVELOPMENT  
CORPORATION  
PLANNING AND DEVELOPMENT DEPARTMENT  
3RD FLOOR, HDC BUILDING HULHUMALE'  
REPUBLIC OF MALDIVES  
TEL. +(960)3353535, FAX +(960)3358892  
EMAIL : planning@hdc.com.mv



E 338682.3140  
N 466993.0280

E 338672.1717  
N 466957.1876

RESIDENTIAL TOWER  
37.25M

GREEN LINK

17.10M

LOT 20426 (N4-11)  
AREA= 636.90 SQM  
(6,855.53 SQFT)

17.10M

ROAD

E 338665.8612  
N 466997.6839

37.25M  
RESIDENTIAL TOWER

E 338655.7189  
N 466961.8435



HOUSING  
DEVELOPMENT  
CORPORATION  
PLANNING AND DEVELOPMENT DEPARTMENT  
3RD FLOOR, HDC BUILDING HULHUMALE'  
REPUBLIC OF MALDIVES  
TEL. +(960)3353535, FAX +(960)3358892  
EMAIL : planning@hdc.com.mv

PROJECT: RESIDENTIAL TOWER (N4-11)

DRAWING: PLOT MAP

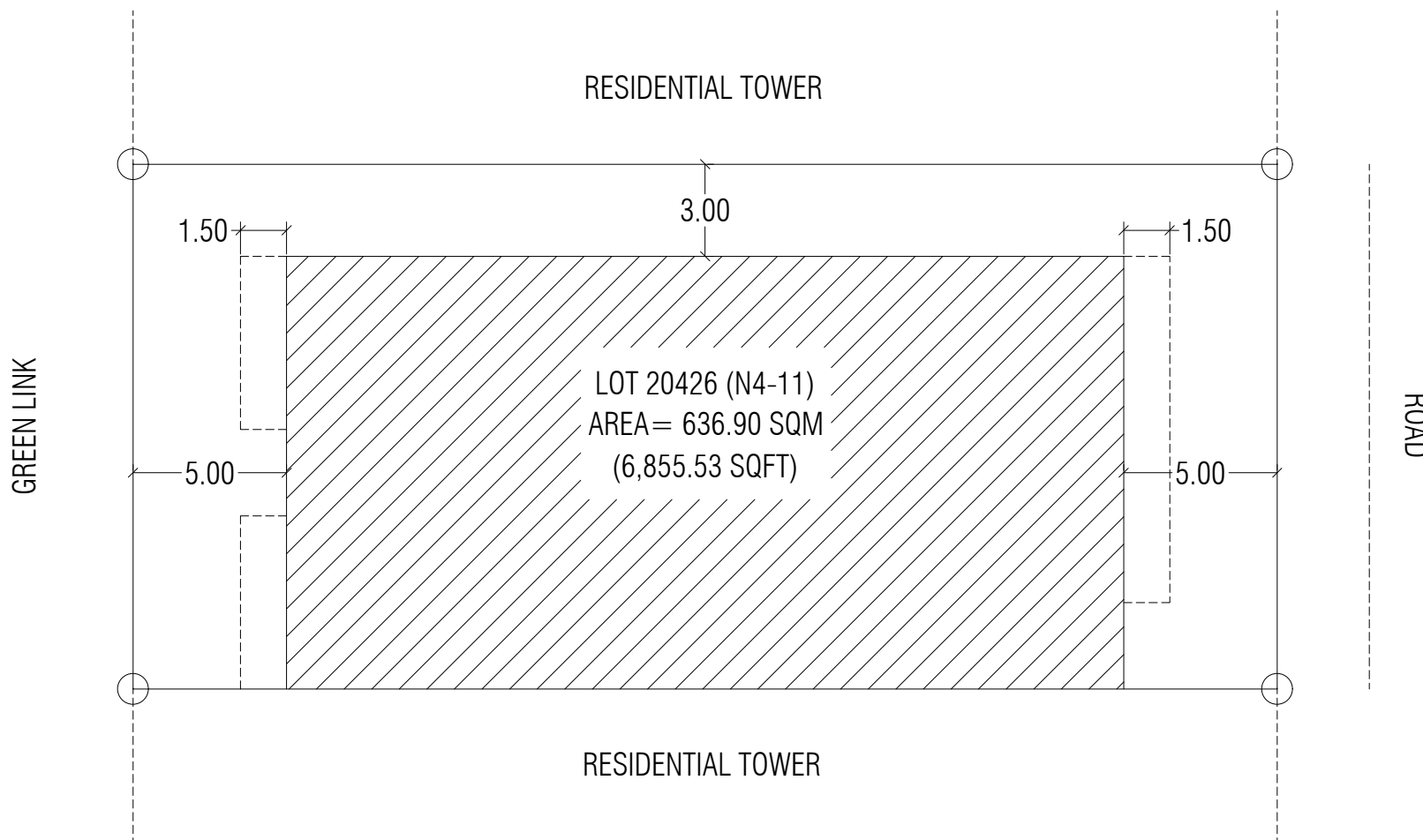
Scale: N.T.S

Drawn by: Razzan

Checked by:

Date: 13th August 2020

Remarks:



LOT NUMBER	PARCEL NUMBER	DESCRIPTION	LAND USE	PLOT AREA	FOOTPRINT	GFA	F.S.I.	SITE COVERAGE	MAX. HEIGHT	NUMBER OF UNITS
20426	N4-11	RESIDENTIAL TOWER	RESIDENTIAL	636.90 SQM	340.12 SQM	3,401.20 SQM	5.34	53%	10 FLOORS	24 UNITS
				6,855.53 SQFT	3,661.02 SQFT	36,610.18 SQFT			34.3M + 4M	



PLANNING AND DEVELOPMENT DEPARTMENT  
3RD FLOOR, HDC BUILDING HULHUMALE'  
REPUBLIC OF MALDIVES  
TEL. +(960)3353535, FAX +(960)3358892  
EMAIL : planning@hdc.com.mv

PROJECT: RESIDENTIAL TOWER (N4-11)

DRAWING: SETBACK PLAN

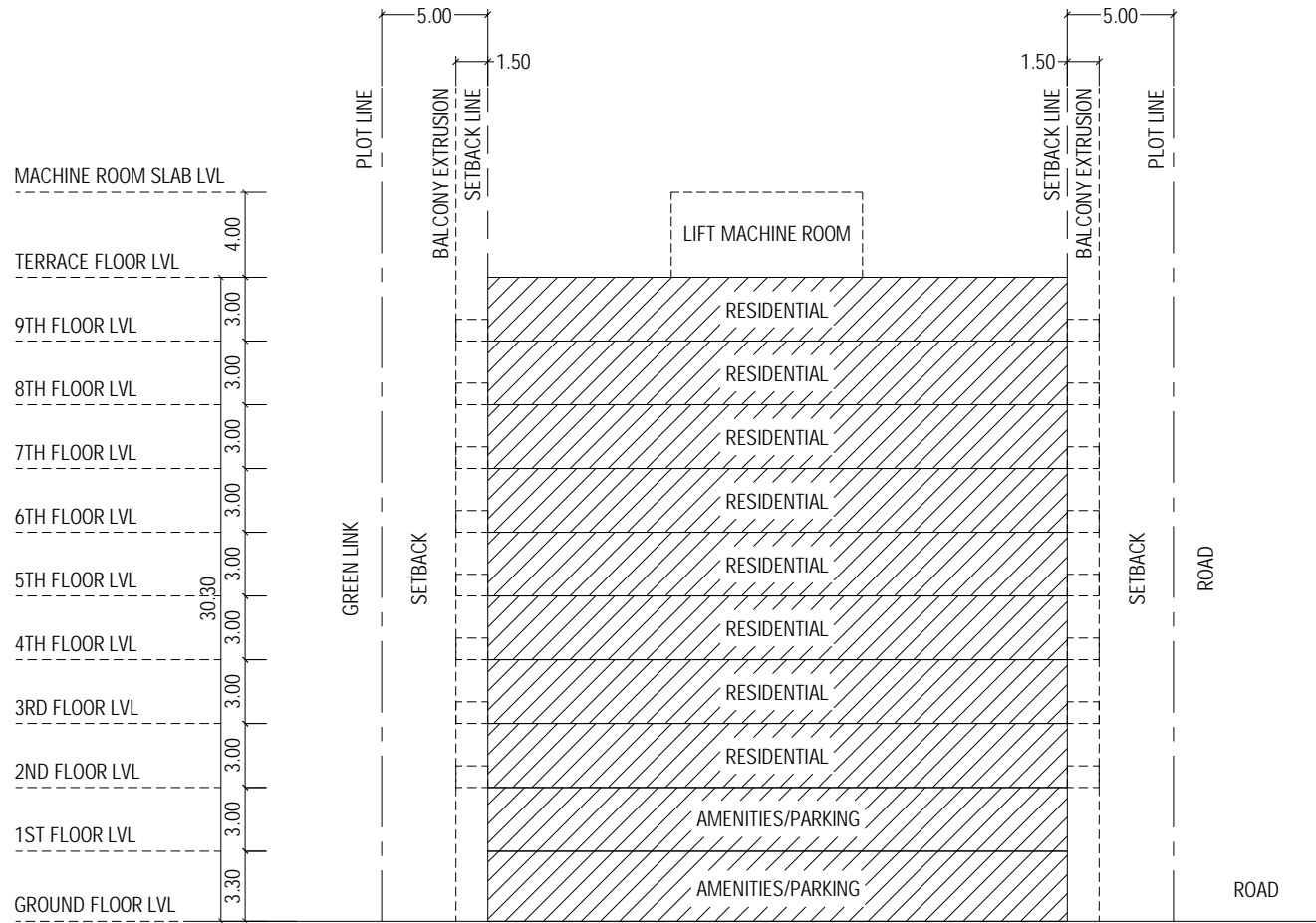
Scale: N.T.S

Drawn by: Razzan

Checked by:

Date: 13th August 2020

Remarks:



PROJECT: RESIDENTIAL TOWER (N4-11)

Scale: N.T.S

Drawn by: Razzan

Checked by:

Date: 13th August 2020

DRAWING: CONCEPTUAL SECTION

Remarks:



**HOUSING  
DEVELOPMENT  
CORPORATION**

PLANNING AND DEVELOPMENT DEPARTMENT  
3RD FLOOR, HDC BUILDING HULHUMALE'  
REPUBLIC OF MALDIVES  
TEL. +(960)3353535, FAX +(960)3358892  
EMAIL : planning@hdc.com.mv



PHASE 2

PHASE 1



PROJECT: RESIDENTIAL TOWER (N4-11)

Scale: N.T.S

Drawn by: Razzan

Checked by:

Date: 13th August 2020

Remarks:

DRAWING: LOCATION MAP



HOUSING  
DEVELOPMENT  
CORPORATION  
PLANNING AND DEVELOPMENT DEPARTMENT  
3RD FLOOR, HDC BUILDING HULHUMALE'  
REPUBLIC OF MALDIVES  
TEL. +(960)3353535, FAX +(960)3358892  
EMAIL : planning@hdc.com.mv



E 338665.8612  
N 466997.6839

E 338655.7189  
N 466961.8435

RESIDENTIAL TOWER  
37.25M

GREEN LINK

17.10M

LOT 20427 (N4-11)  
AREA= 636.90 SQM  
(6,855.53 SQFT)

17.10M

ROAD

E 338649.4084  
N 467002.3398

37.25M  
RESIDENTIAL TOWER

E 338639.2661  
N 466966.4994



PLANNING AND DEVELOPMENT DEPARTMENT  
3RD FLOOR, HDC BUILDING HULHUMALE'  
REPUBLIC OF MALDIVES  
TEL. +(960)3353535, FAX +(960)3358892  
EMAIL : planning@hdc.com.mv

PROJECT: RESIDENTIAL TOWER (N4-11)

Scale: N.T.S

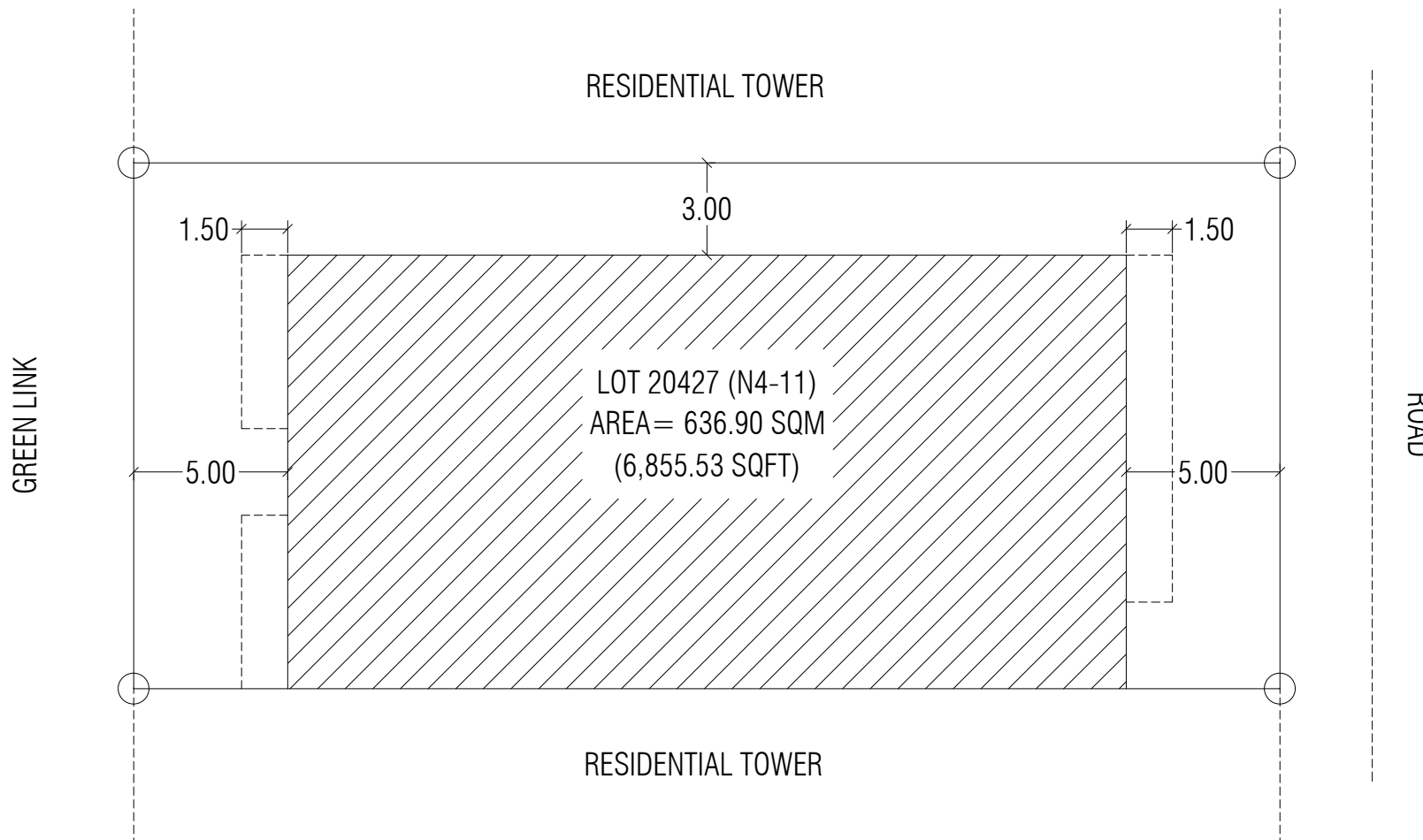
Drawn by: Razzan

Checked by:

Date: 13th August 2020

Remarks:

DRAWING: PLOT MAP



LOT NUMBER	PARCEL NUMBER	DESCRIPTION	LAND USE	PLOT AREA	FOOTPRINT	GFA	F.S.I.	SITE COVERAGE	MAX. HEIGHT	NUMBER OF UNITS
20427	N4-11	RESIDENTIAL TOWER	RESIDENTIAL	636.90 SQM	340.12 SQM	3,401.20 SQM	5.34	53%	10 FLOORS	24 UNITS
				6,855.53 SQFT	3,661.02 SQFT	36,610.18 SQFT			34.3M + 4M	



HOUSING DEVELOPMENT CORPORATION  
 PLANNING AND DEVELOPMENT DEPARTMENT  
 3RD FLOOR, HDC BUILDING HULHUMALE'  
 REPUBLIC OF MALDIVES  
 TEL. +(960)3353535, FAX +(960)3358892  
 EMAIL : planning@hdc.com.mv

PROJECT: RESIDENTIAL TOWER (N4-11)

DRAWING: SETBACK PLAN

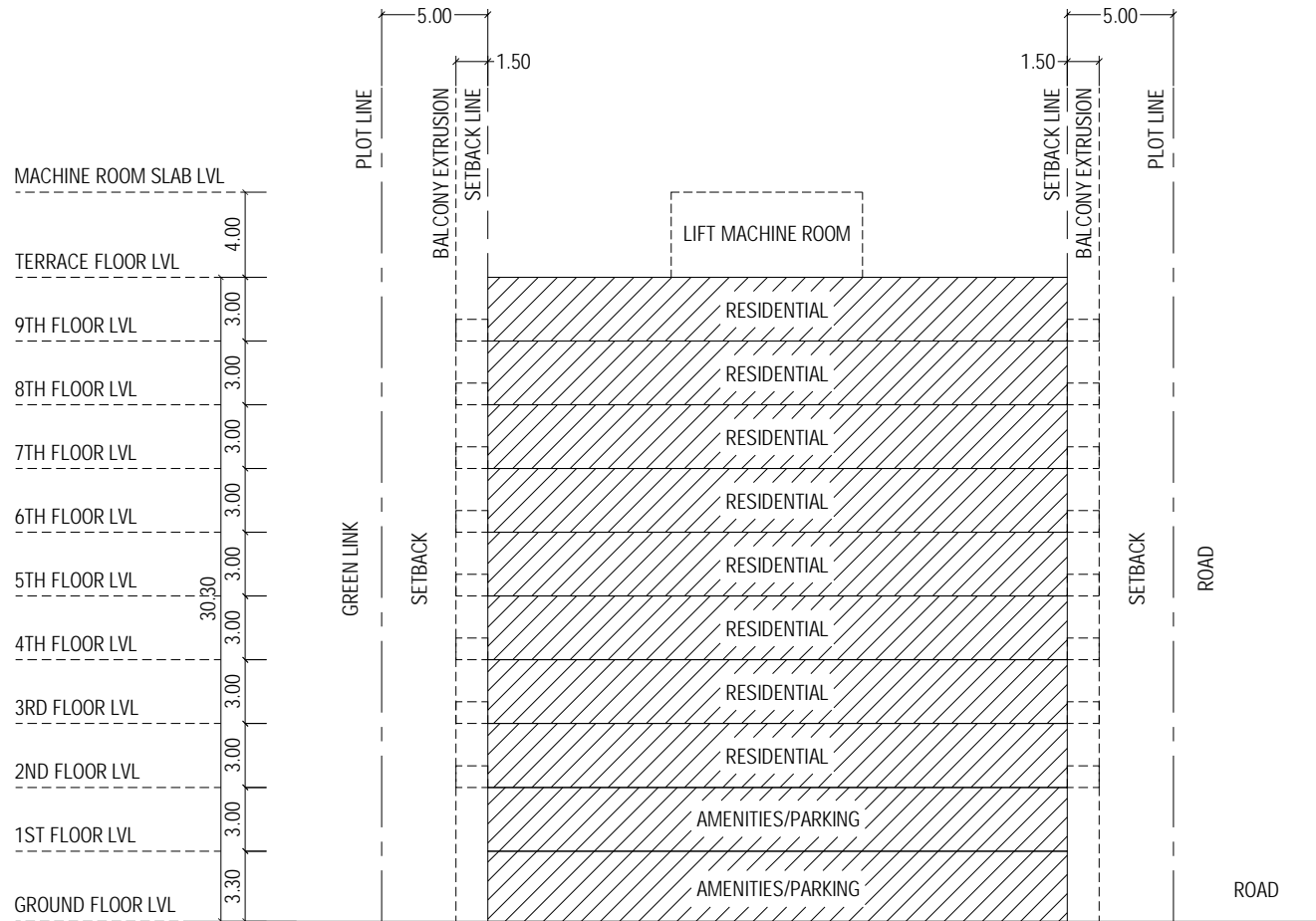
Scale: N.T.S

Drawn by: Razzan

Checked by:

Date: 13th August 2020

Remarks:



PROJECT: RESIDENTIAL TOWER (N4-11)

Scale: N.T.S

Drawn by: Razzan

Checked by:

Date: 13th August 2020

DRAWING: CONCEPTUAL SECTION

Remarks:



**HOUSING  
DEVELOPMENT  
CORPORATION**

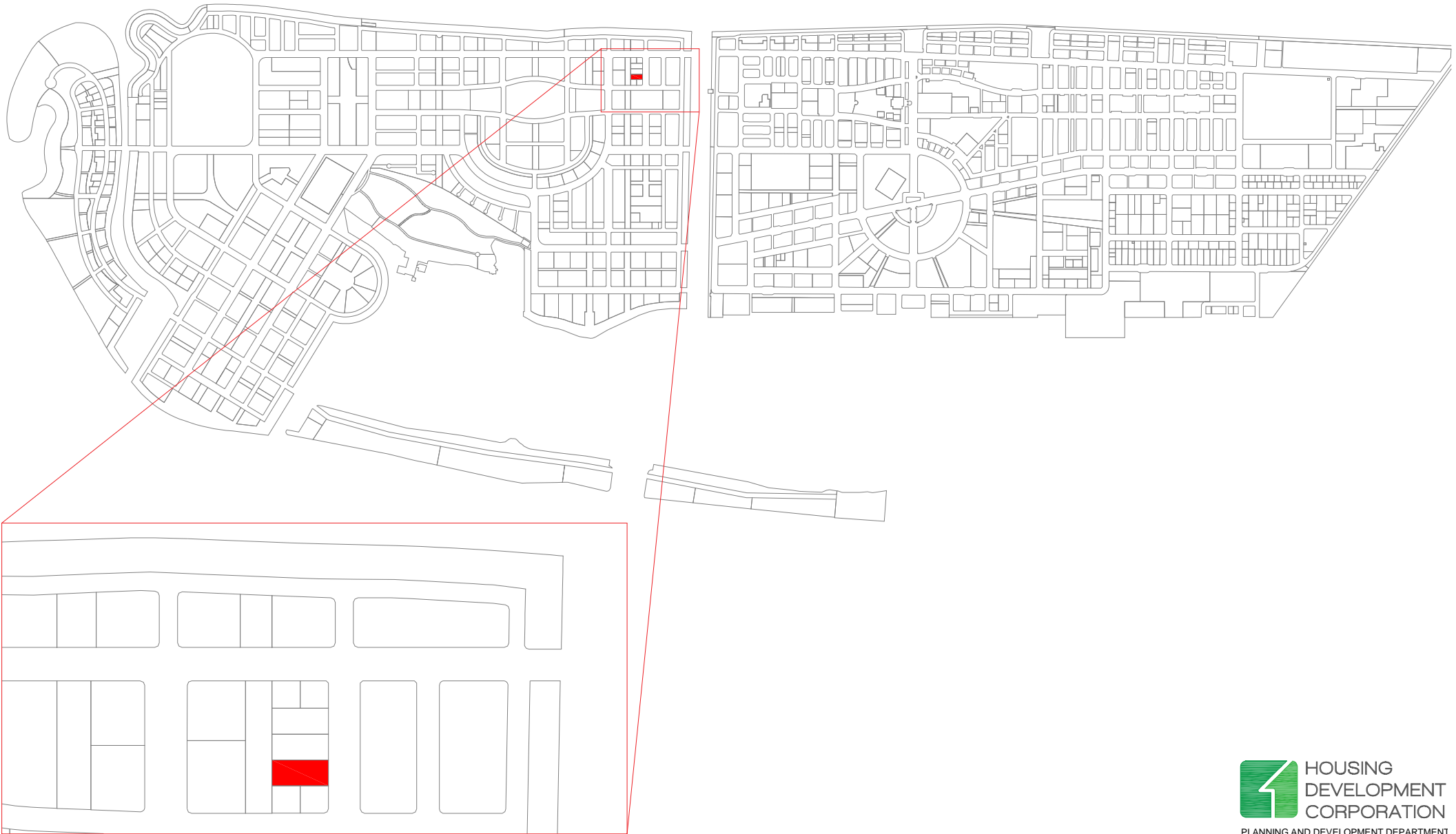
PLANNING AND DEVELOPMENT DEPARTMENT  
3RD FLOOR, HDC BUILDING HULHUMALE'  
REPUBLIC OF MALDIVES  
TEL. +(960)3353535, FAX +(960)3358892  
EMAIL : planning@hdc.com.mv





PHASE 2

PHASE 1



PROJECT: RESIDENTIAL TOWER (N4-11)

Scale: N.T.S

Drawn by: Razzan

Checked by:

Date: 13th August 2020

Remarks:

DRAWING: LOCATION MAP



**HOUSING  
DEVELOPMENT  
CORPORATION**

PLANNING AND DEVELOPMENT DEPARTMENT  
3RD FLOOR, HDC BUILDING HULHUMALE'  
REPUBLIC OF MALDIVES  
TEL. +(960)3353535, FAX +(960)3358892  
EMAIL : planning@hdc.com.mv



E 338649.4084  
N 467002.3398

RESIDENTIAL TOWER  
37.25M

E 338639.2661  
N 466966.4994

GREEN LINK

17.10M

LOT 20428 (N4-11)  
AREA = 636.90 SQM  
(6,855.53 SQFT)

17.10M

ROAD

E 338632.9556  
N 467006.9957

RESIDENTIAL TOWER  
37.25M

E 338622.8133  
N 466971.1553



PLANNING AND DEVELOPMENT DEPARTMENT  
3RD FLOOR, HDC BUILDING HULHUMALE'  
REPUBLIC OF MALDIVES  
TEL. +(960)3353535, FAX +(960)3358892  
EMAIL : planning@hdc.com.mv

PROJECT: RESIDENTIAL TOWER (N4-11)

Scale: N.T.S

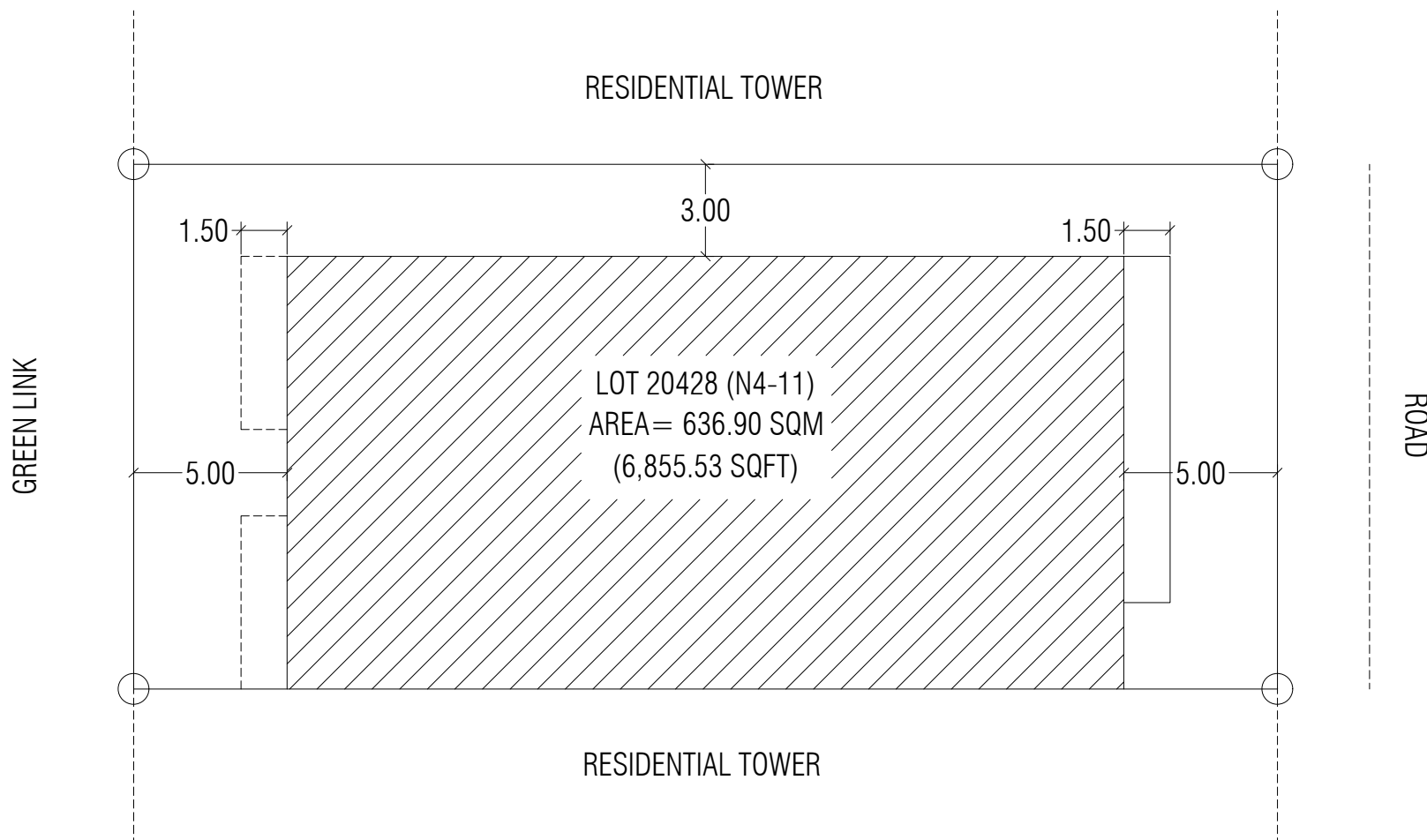
Drawn by: Razzan

Checked by:

Date: 13th August 2020

Remarks:

DRAWING: PLOT MAP



LOT NUMBER	PARCEL NUMBER	DESCRIPTION	LAND USE	PLOT AREA	FOOTPRINT	GFA	F.S.I.	SITE COVERAGE	MAX. HEIGHT	NUMBER OF UNITS
20428	N4-11	RESIDENTIAL TOWER	RESIDENTIAL	636.90 SQM	340.12 SQM	3,401.20 SQM	5.34	53%	10 FLOORS	24 UNITS
				6,855.53 SQFT	3,661.02 SQFT	36,610.18 SQFT			34.3M + 4M	



PLANNING AND DEVELOPMENT DEPARTMENT  
 3RD FLOOR, HDC BUILDING HULHUMALE'  
 REPUBLIC OF MALDIVES  
 TEL. +(960)3353535, FAX +(960)3358892  
 EMAIL : planning@hdc.com.mv

PROJECT: RESIDENTIAL TOWER (N4-11)

DRAWING: SETBACK PLAN

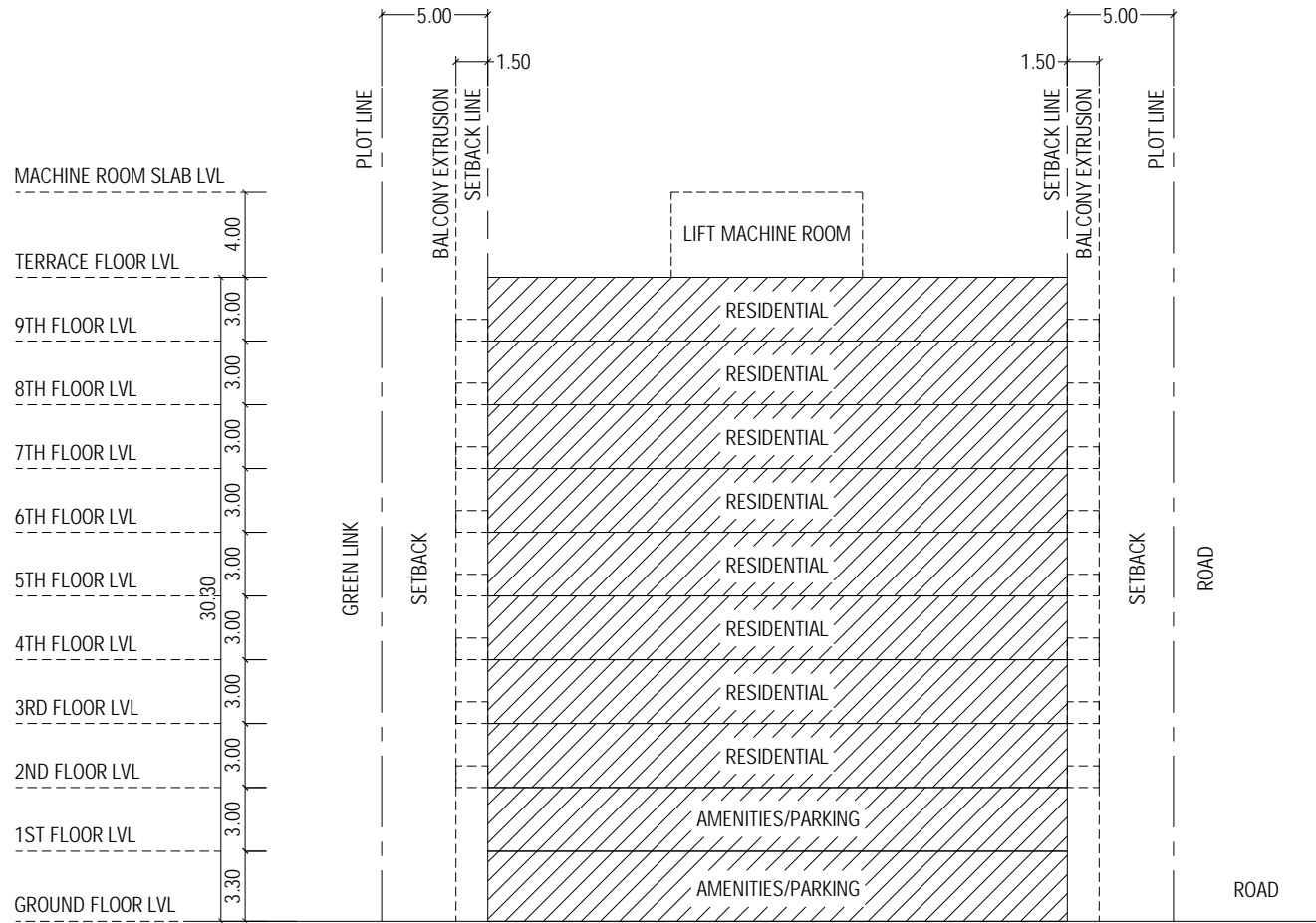
Scale: N.T.S

Drawn by: Razzan

Checked by:

Date: 13th August 2020

Remarks:



PROJECT: RESIDENTIAL TOWER (N4-11)

Scale: N.T.S

Drawn by: Razzan

Checked by:

Date: 13th August 2020

DRAWING: CONCEPTUAL SECTION

Remarks:



**HOUSING  
DEVELOPMENT  
CORPORATION**

PLANNING AND DEVELOPMENT DEPARTMENT  
3RD FLOOR, HDC BUILDING HULHUMALE'  
REPUBLIC OF MALDIVES  
TEL. +(960)3353535, FAX +(960)3358892  
EMAIL : planning@hdc.com.mv