

PROJECT: LOT 10901

Scale: N.T.S

Drawn by: Ziya

Checked by: *cl-sh*

Date: 25th April 2022

Remarks:

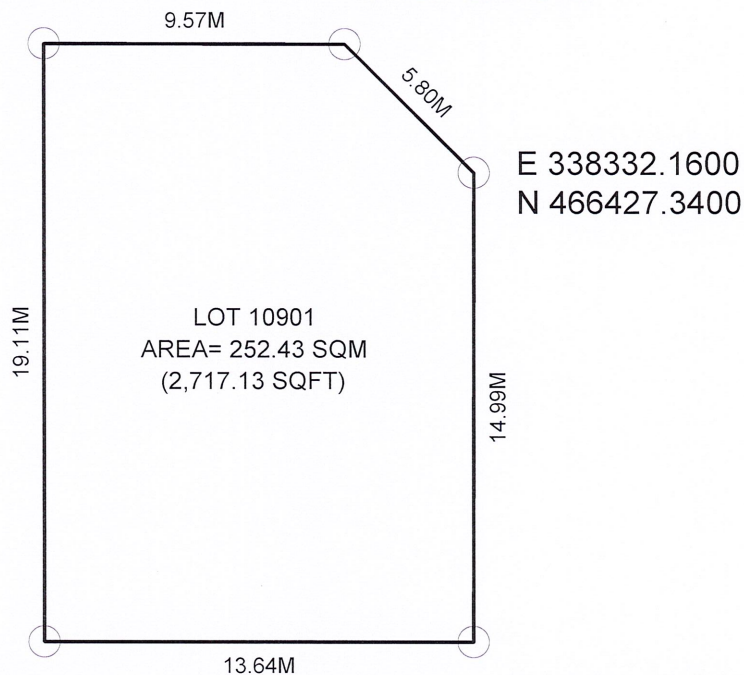
DRAWING: LOCATION MAP


**HOUSING DEVELOPMENT CORPORATION**  
 PLANNING AND DEVELOPMENT DEPARTMENT  
 3RD FLOOR, HDC BUILDING HULHUMALE'  
 REPUBLIC OF MALDIVES  
 TEL. +(960)3353535, FAX +(960)3358892  
 EMAIL : planning@hdc.com.mv



E 338339.8455  
N 466439.3638

E 338337.2259  
N 466430.1610



E 338332.1600  
N 466427.3400

E 338321.4541  
N 466444.5683

E 338317.7400  
N 466431.4438

PROJECT: LOT 10901

Scale: N:1.5

Drawn by: Ziya

Checked by: Zinaf

Date: 25th April 2022

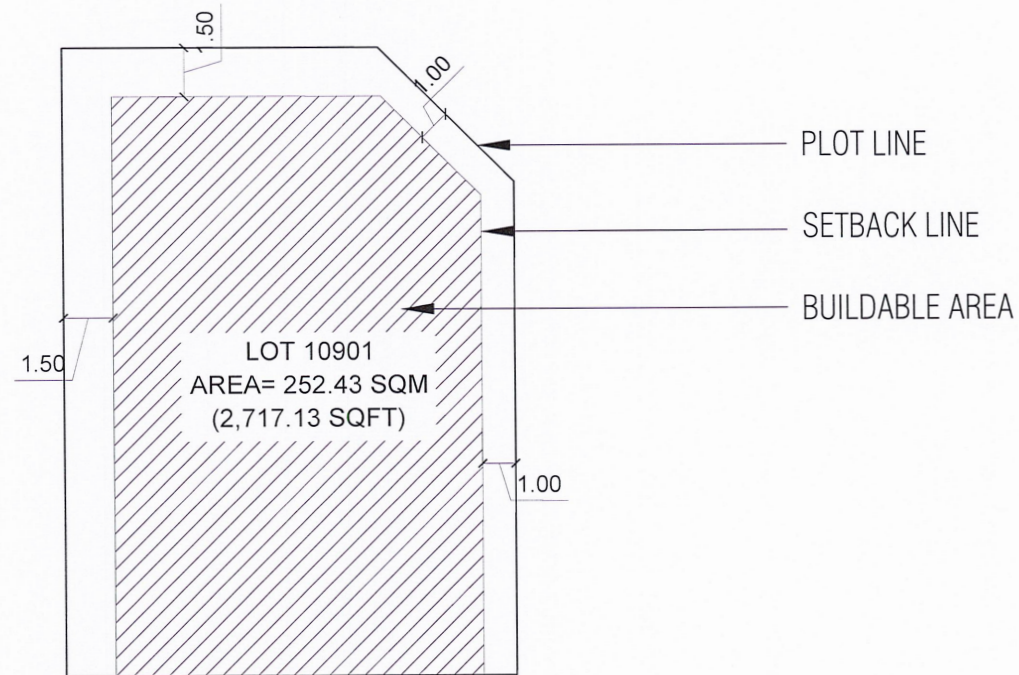
Remarks:

DRAWING: PLOT MAP



HOUSING  
DEVELOPMENT  
CORPORATION  
PLANNING AND DEVELOPMENT DEPARTMENT  
3RD FLOOR, HDC BUILDING HULHUMALE'  
REPUBLIC OF MALDIVES  
TEL. +(960)3353535, FAX +(960)3358892  
EMAIL : planning@hdc.com.mv





Lot Number	Description	Land Use	Plot Area	Foot Print	Gross Floor Area (G.F.A)	Plot Ratio (F.S.I)	Site Coverage	Max Height / Floors
10901	Local Developer	Pure Residential	252.43 SQM	191.83 SQM	1,342.81 SQM	4.50	76%	8 Floors / 30.1m
			2,717.13 SQFT	2,064.84 SQFT	14,453.87 SQFT			26.1m bldg + 4m Lift Machine Room


**HOUSING DEVELOPMENT CORPORATION**  
 PLANNING AND DEVELOPMENT DEPARTMENT  
 3RD FLOOR, HDC BUILDING HULHUMALE'  
 REPUBLIC OF MALDIVES  
 TEL. +(960)3353535, FAX +(960)3358892  
 EMAIL : planning@hdc.com.mv

PROJECT: LOT 10901

DRAWING: SETBACK PLAN

Scale: N.T.S

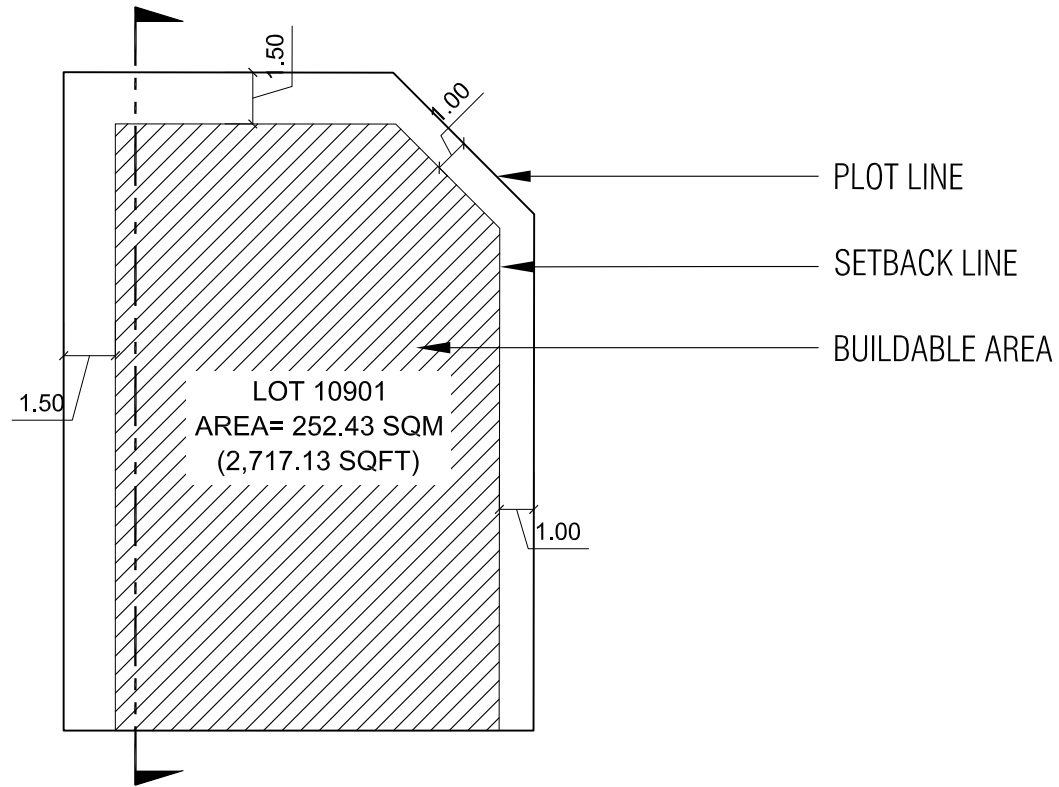
Drawn by: Ziya

Checked by:

*cl-st*

Date: 24th April 2022

Remarks:



Lot Number	Parcel Number	Description	Land Use	Plot Area	Foot Print	Gross Floor Area (G.F.A)	Plot Ratio (F.S.I)	Site Coverage	Max Height / Floors	No. of Units
10901	N1-56b	Local Developer	Pure Residential	252.43 SQM 2,717.13 SQFT	191.83 SQM 2,064.84 SQFT	1,074.25 SQM 11,563.10 SQFT	4.50	76%	8 Floors / 28m 24m bldg + 4m Lift Machine Room	9

PROJECT: LOT 10901

DRAWING: SETBACK PLAN

Scale: N.T.S

Drawn by: Ziya

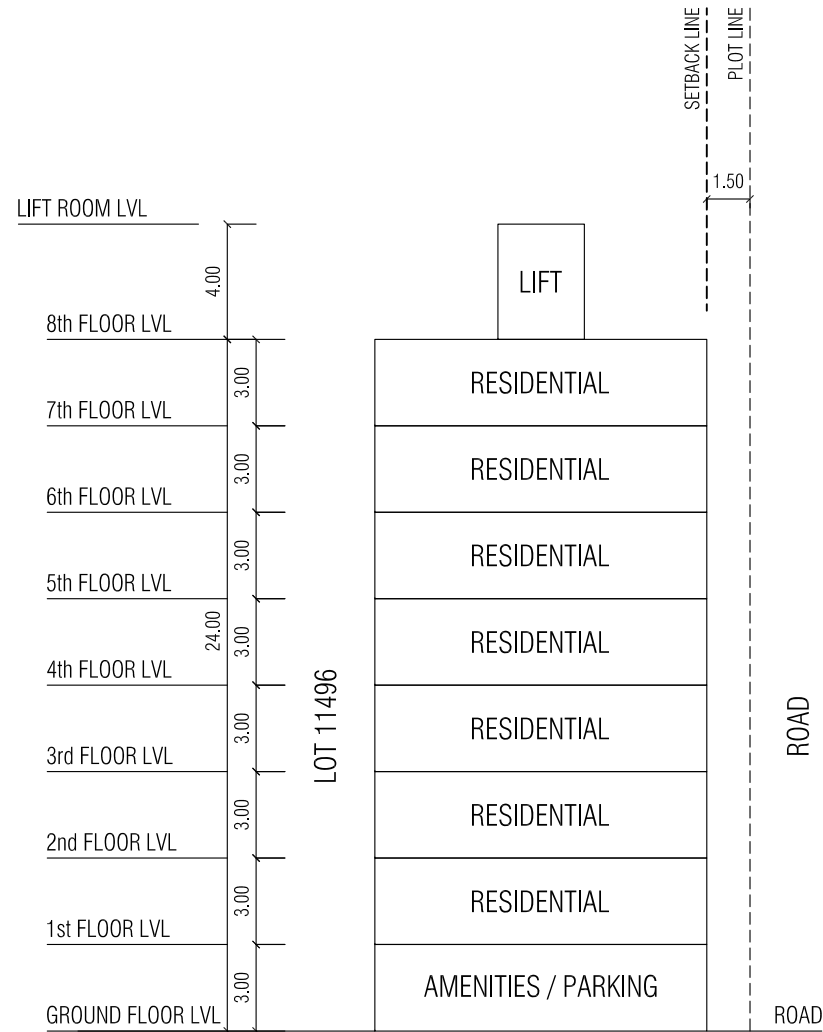
Checked by:

Date: 24th April 2022

Remarks:

dl-2-1.

**HOUSING DEVELOPMENT CORPORATION**  
 PLANNING AND DEVELOPMENT DEPARTMENT  
 3RD FLOOR, HDC BUILDING HULHUMALE'  
 REPUBLIC OF MALDIVES  
 TEL. +(960)3353535, FAX +(960)3358892  
 EMAIL : planning@hdc.com.mv



PROJECT: LOT 10901

Scale: N.T.S

Drawn by: Mauman

Checked by:

Date: 15th June 2022

Remarks:

*dl-2+*

DRAWING: CONCEPTUAL SECTION