



PHASE 2

PHASE 1



**HOUSING
DEVELOPMENT
CORPORATION**
PLANNING AND DEVELOPMENT DEPARTMENT
3RD FLOOR, HDC BUILDING HULHUMALE'
REPUBLIC OF MALDIVES
TEL. +(960)3353535, FAX +(960)3358892
EMAIL : planning@hdc.com.mv

PROJECT: RESIDENTIAL TOWER (N4-11)

DRAWING: LOCATION MAP

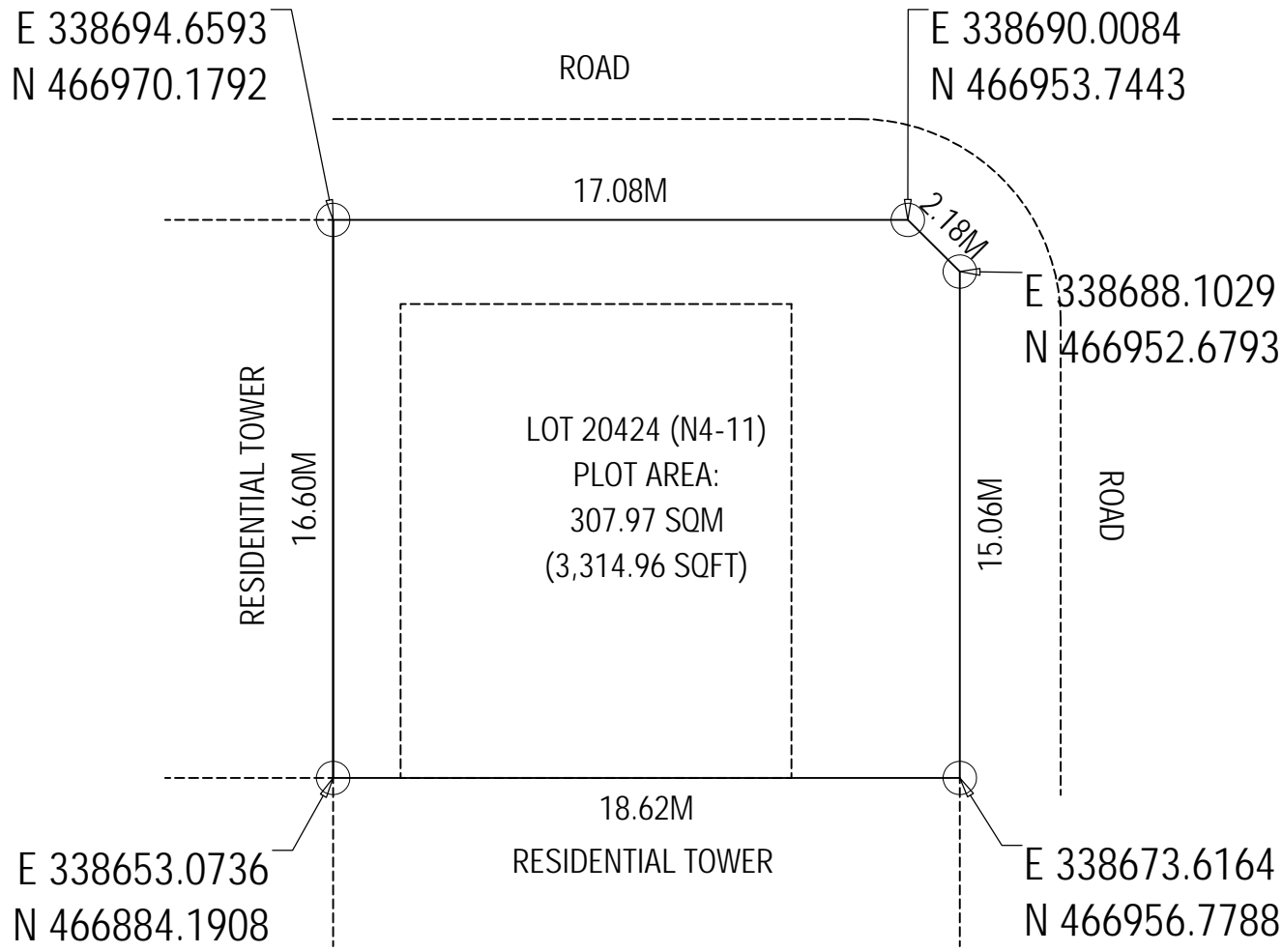
Scale: N.T.S

Drawn by: Razzan

Checked by:

Date: 3rd September 2020

Remarks:



PLANNING AND DEVELOPMENT DEPARTMENT
 3RD FLOOR, HDC BUILDING HULHUMALE'
 REPUBLIC OF MALDIVES
 TEL. +(960)3353535, FAX +(960)3358892
 EMAIL : planning@hdc.com.mv

PROJECT: RESIDENTIAL TOWER (N4-11)

DRAWING: PLOT MAP

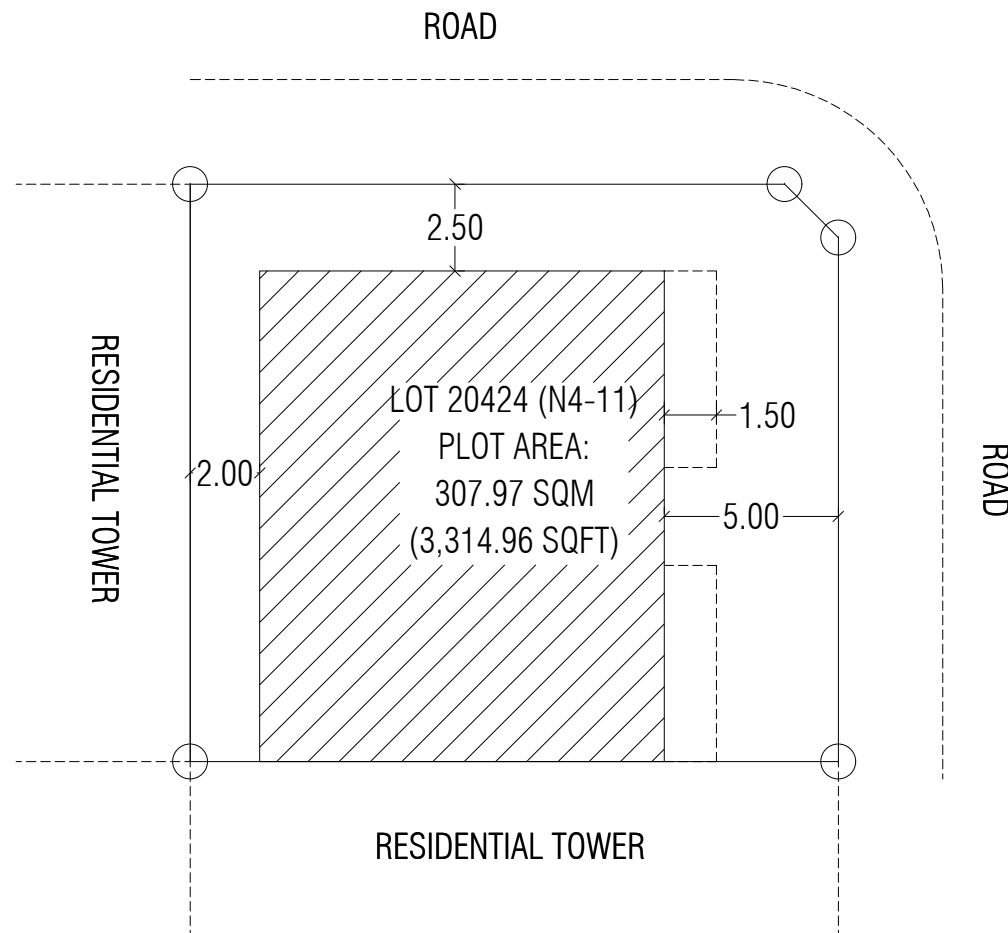
Scale: N.T.S

Drawn by: Razzan

Checked by:

Date: 3rd September 2020

Remarks:




PLANNING AND DEVELOPMENT DEPARTMENT
 3RD FLOOR, HDC BUILDING HULHUMALE'
 REPUBLIC OF MALDIVES
 TEL. +(960)3353535, FAX +(960)3358892
 EMAIL : planning@hdc.com.mv

LOT NUMBER	PARCEL NUMBER	DESCRIPTION	LAND USE	PLOT AREA	FOOTPRINT	GFA	F.S.I.	SITE COVERAGE	MAX. HEIGHT	NUMBER OF UNITS
20424	N4-11	RESIDENTIAL TOWER	RESIDENTIAL	307.97 SQM	163.89 SQM	1,638.90 SQM	5.32	53%	10 FLOORS	16 UNITS
				3,314.96 SQFT	1,764.10 SQFT	17,640.96 SQFT			34.3M + 4M	

PROJECT: RESIDENTIAL TOWER (N4-11)

DRAWING: SETBACK PLAN

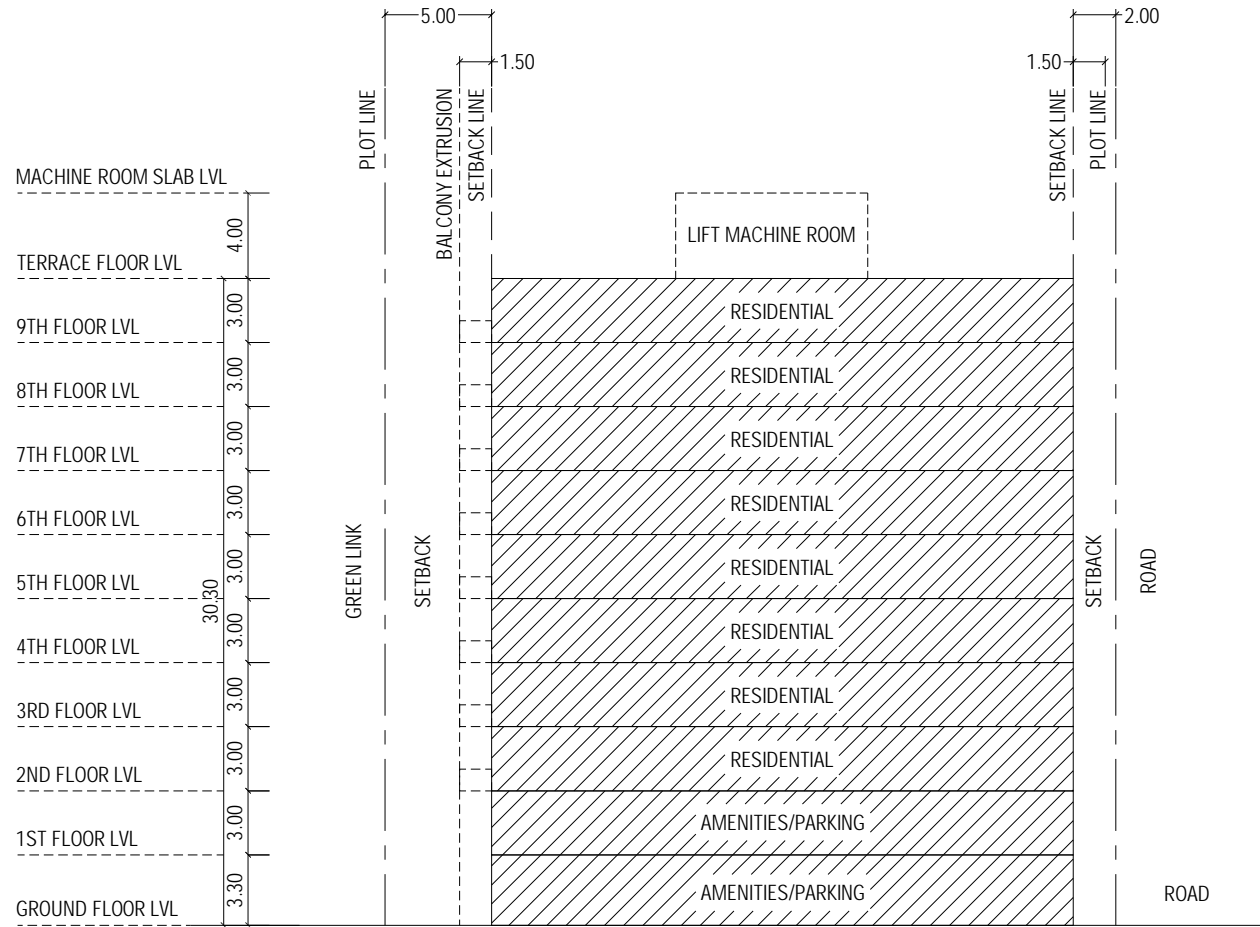
Scale: N.T.S

Drawn by: Razzan

Checked by:

Date: 3rd September 2020

Remarks:



**HOUSING
DEVELOPMENT
CORPORATION**

PLANNING AND DEVELOPMENT DEPARTMENT
3RD FLOOR, HDC BUILDING HULHUMALE'
REPUBLIC OF MALDIVES
TEL. +(960)3353535, FAX +(960)3358892
EMAIL : planning@hdc.com.mv

PROJECT: RESIDENTIAL TOWER (N4-11)

Scale: N.T.S

Drawn by: Razzan

Checked by:

Date: 3rd September 2020

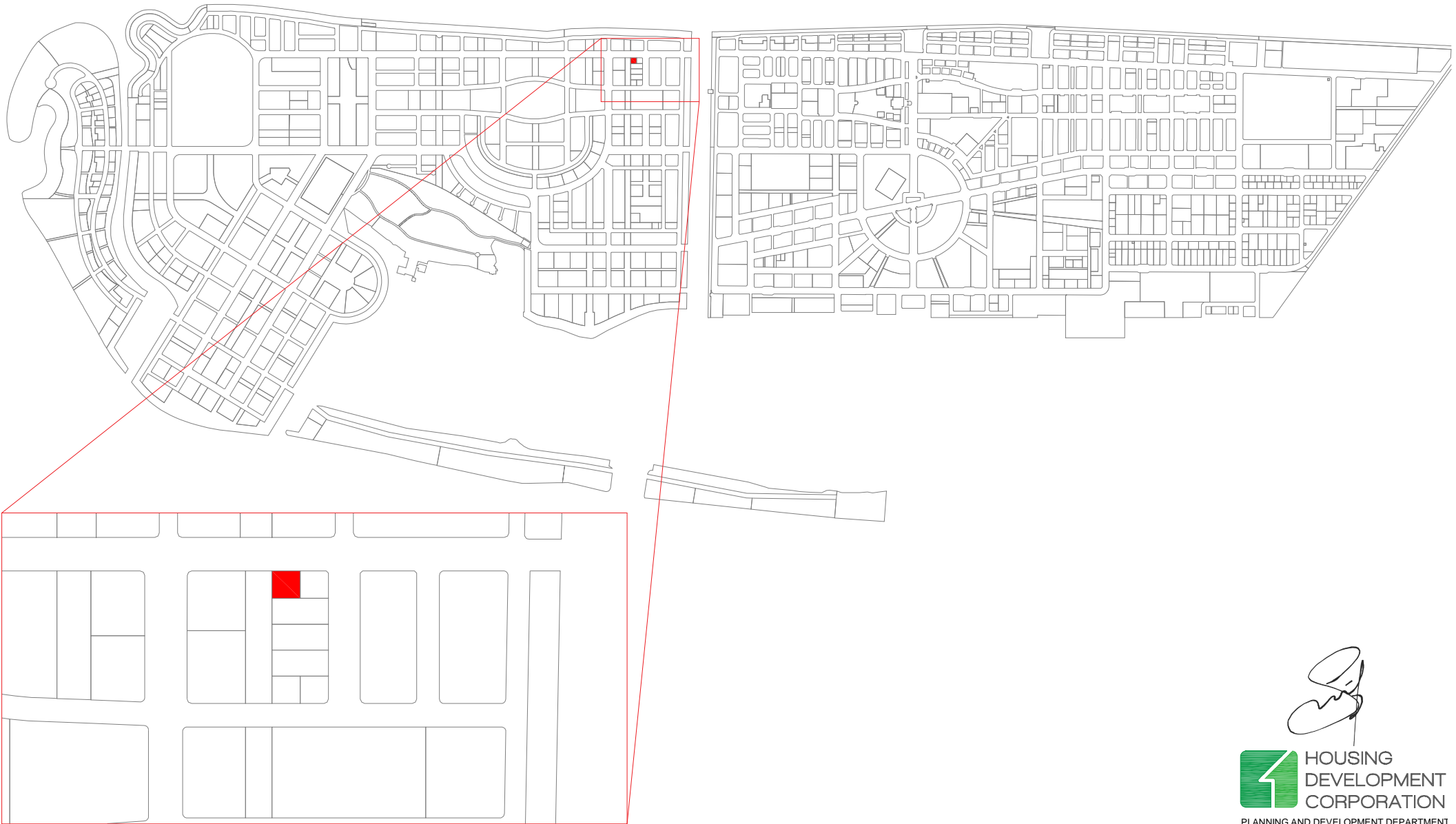
DRAWING: CONCEPTUAL SECTION

Remarks:



PHASE 2

PHASE 1



PROJECT: RESIDENTIAL TOWER (N4-11)

Scale: N.T.S

Drawn by: Razzan

Checked by:

Date: 3rd September 2020

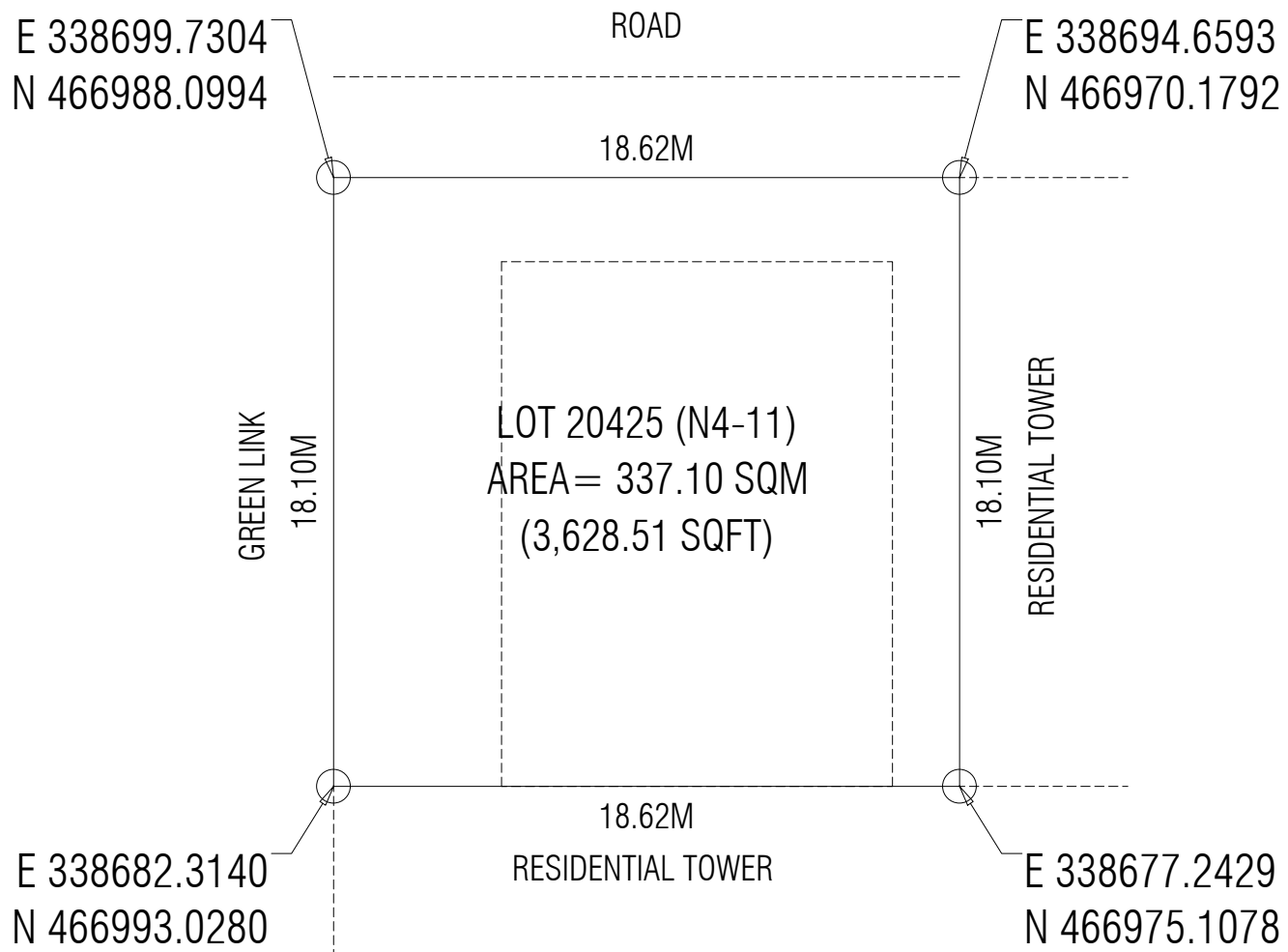
Remarks:

DRAWING: LOCATION MAP

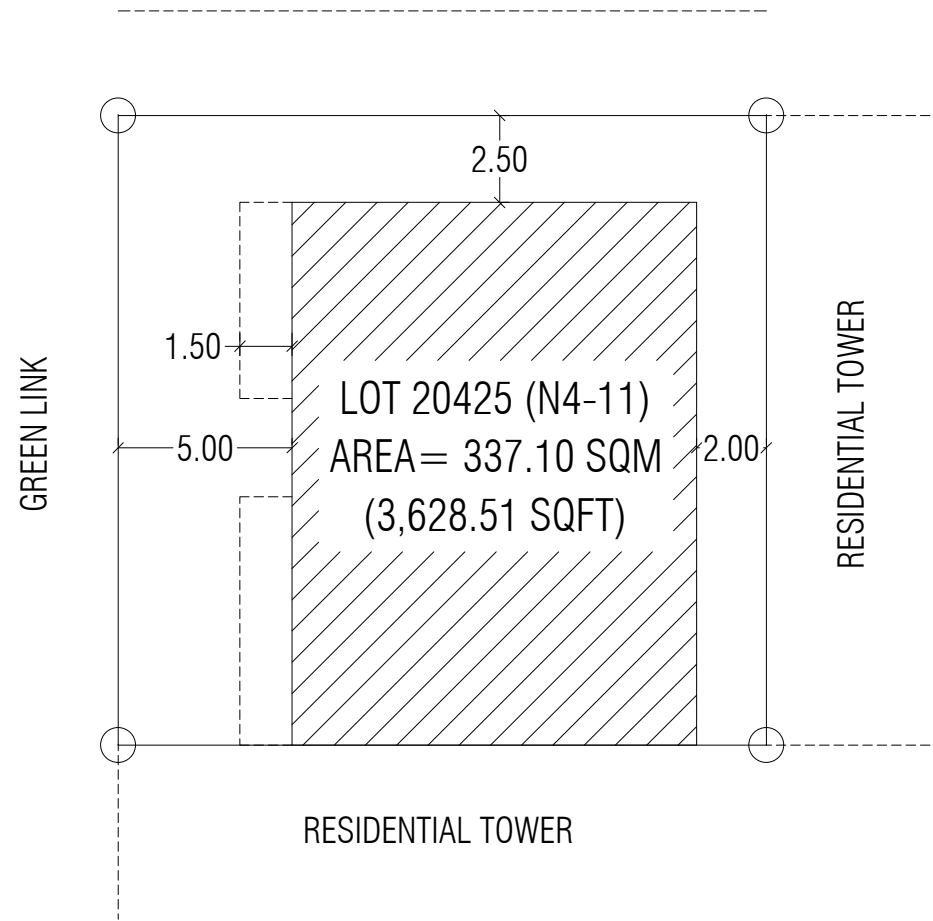


**HOUSING
DEVELOPMENT
CORPORATION**

PLANNING AND DEVELOPMENT DEPARTMENT
3RD FLOOR, HDC BUILDING HULHUMALE'
REPUBLIC OF MALDIVES
TEL. +(960)3353535, FAX +(960)3358892
EMAIL : planning@hdc.com.mv



PLANNING AND DEVELOPMENT DEPARTMENT
3RD FLOOR, HDC BUILDING HULHUMALE'
REPUBLIC OF MALDIVES
TEL. +(960)3353535, FAX +(960)3358892
EMAIL : planning@hdc.com.mv



PLANNING AND DEVELOPMENT DEPARTMENT
 3RD FLOOR, HDC BUILDING HULHUMALE'
 REPUBLIC OF MALDIVES
 TEL. +(960)3353535, FAX +(960)3358892
 EMAIL : planning@hdc.com.mv

LOT NUMBER	PARCEL NUMBER	DESCRIPTION	LAND USE	PLOT AREA	FOOTPRINT	GFA	F.S.I.	SITE COVERAGE	MAX. HEIGHT	NUMBER OF UNITS
20425	N4-11	RESIDENTIAL TOWER	RESIDENTIAL	337.10 SQM	181.33 SQM	1,813.30 SQM	5.38	54%	10 FLOORS	16 UNITS
				3,628.51 SQFT	1,951.82 SQFT	19,518.18 SQFT			34.3M + 4M	

PROJECT: RESIDENTIAL TOWER (N4-11)

DRAWING: SETBACK PLAN

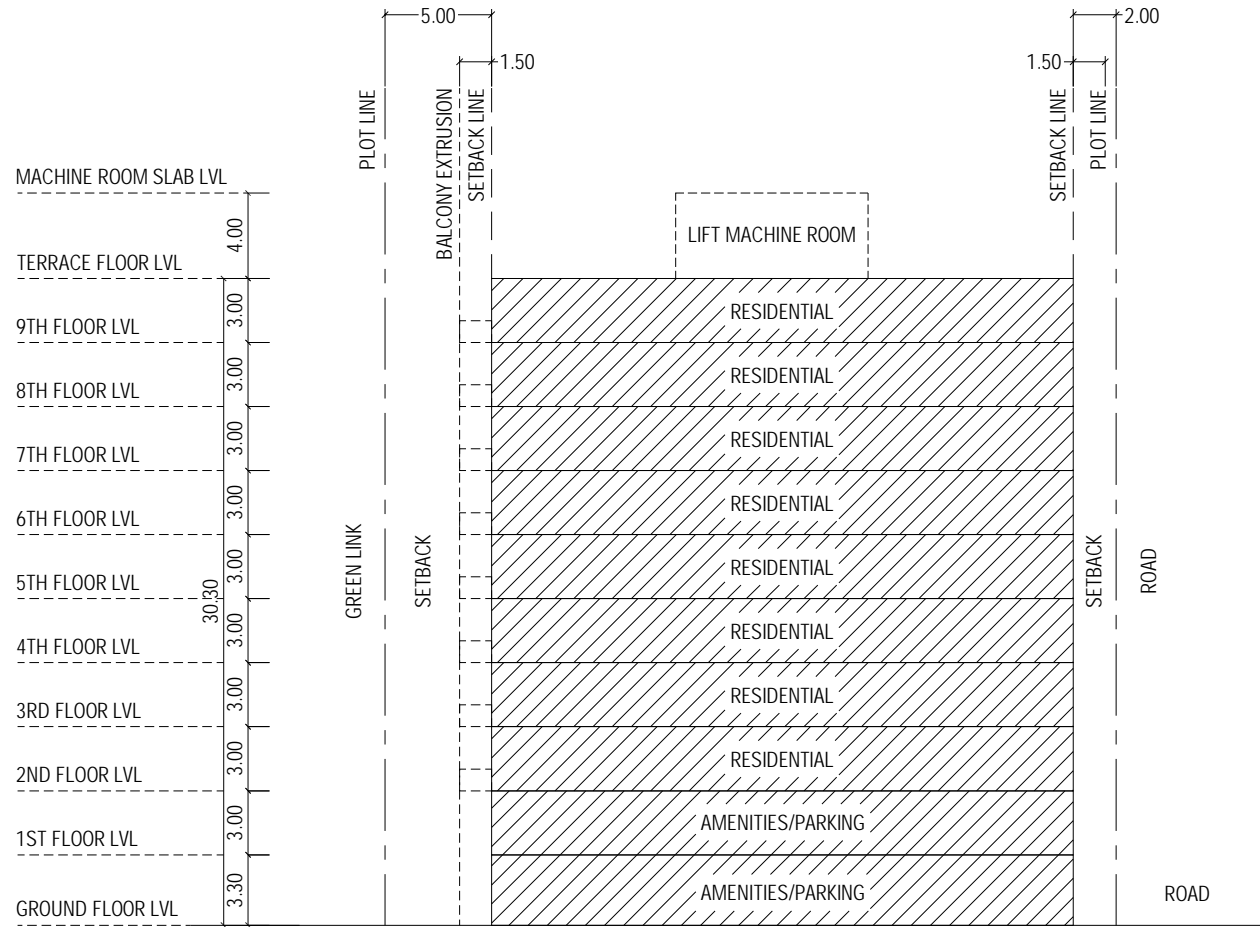
Scale: N.T.S

Drawn by: Razzan

Checked by:

Date: 3rd September 2020

Remarks:




HOUSING
DEVELOPMENT
CORPORATION
PLANNING AND DEVELOPMENT DEPARTMENT
3RD FLOOR, HDC BUILDING HULHUMALE'
REPUBLIC OF MALDIVES
TEL. +(960)3353535, FAX +(960)3358892
EMAIL : planning@hdc.com.mv

PROJECT: RESIDENTIAL TOWER (N4-11)

Scale: N.T.S

Drawn by: Razzan

Checked by:

Date: 13th August 2020

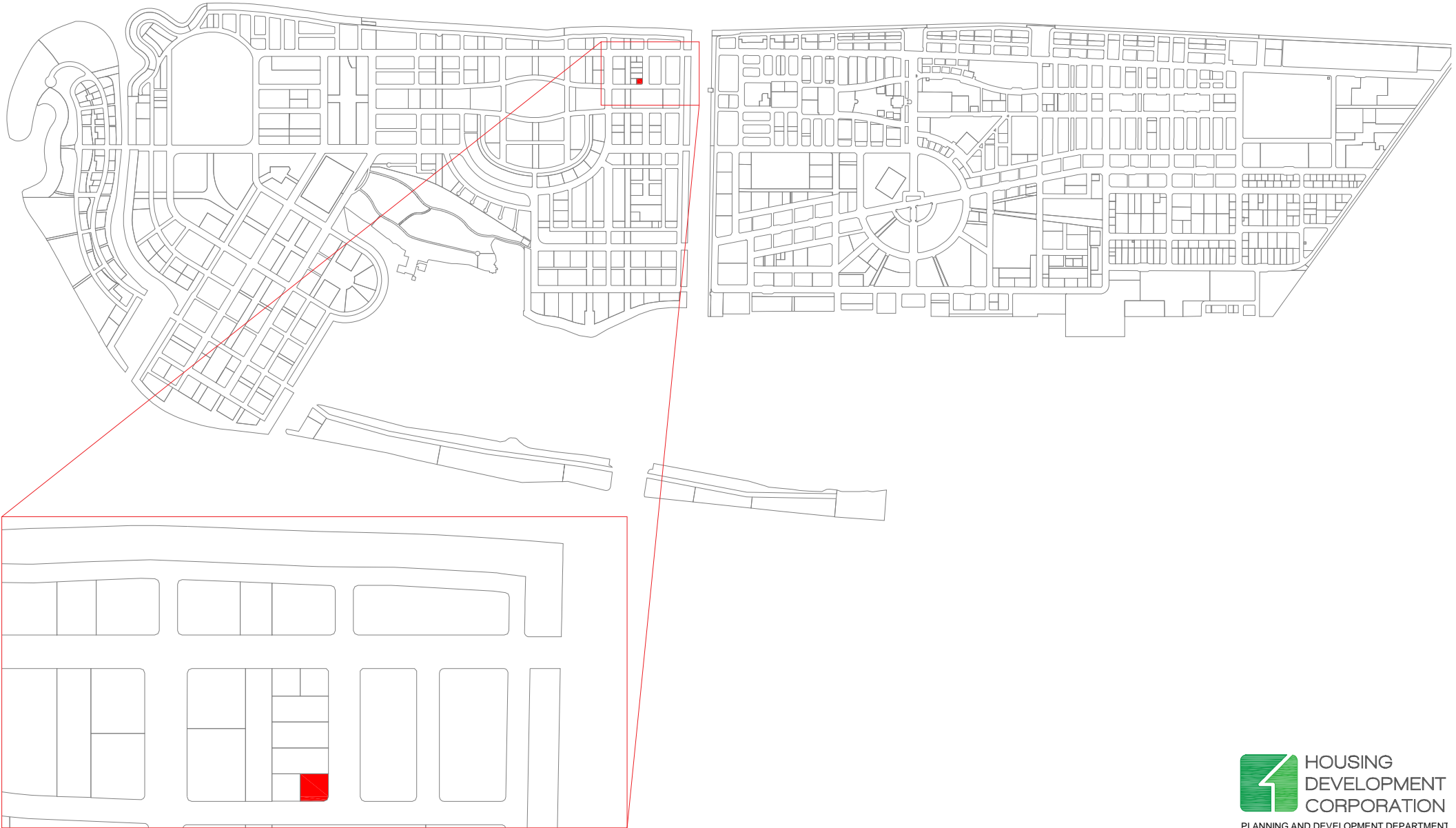
DRAWING: CONCEPTUAL SECTION

Remarks:



PHASE 2

PHASE 1



PROJECT: RESIDENTIAL TOWER (N4-11)

Scale: N.T.S

Drawn by: Razzan

Checked by:

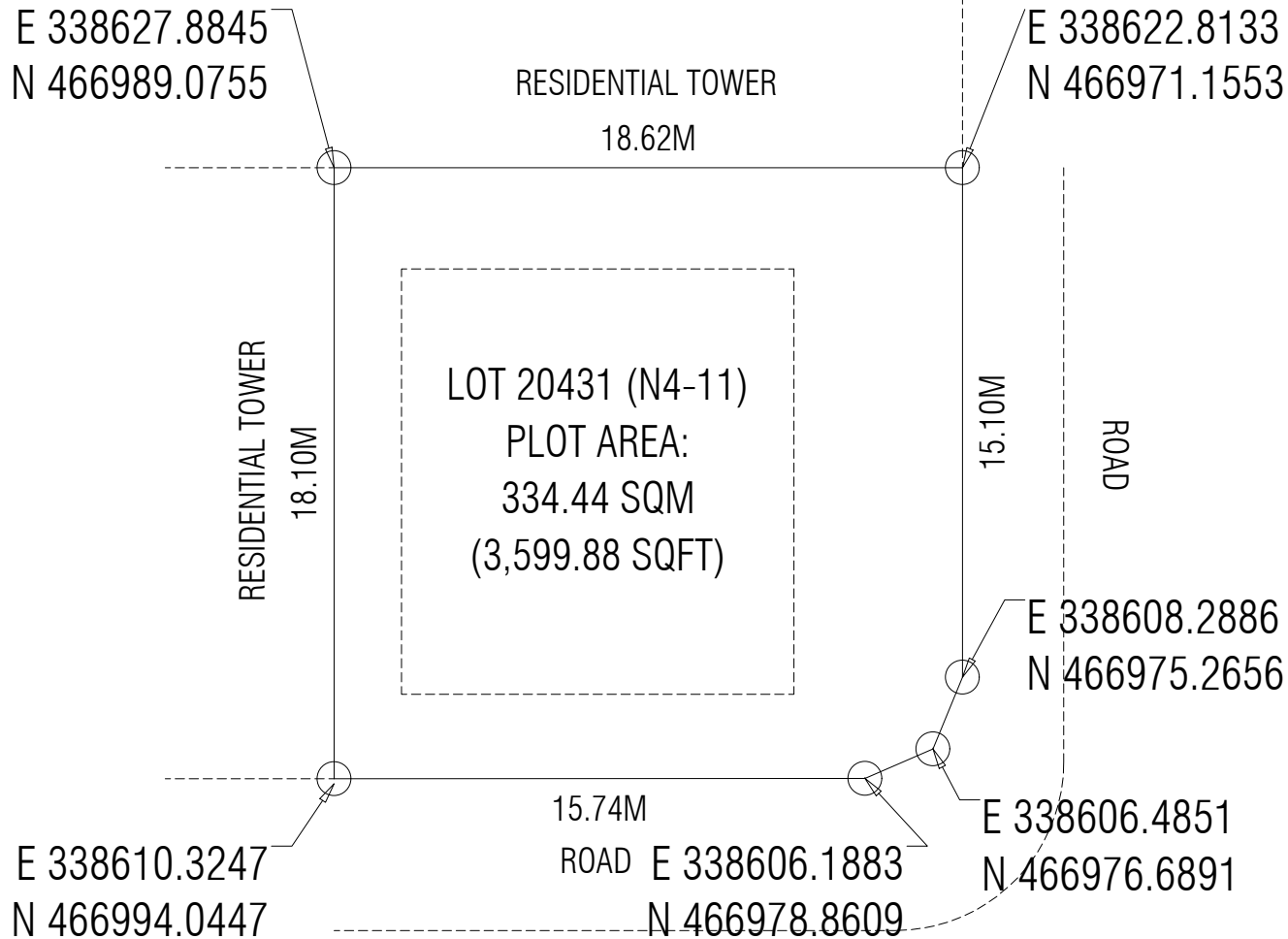
Date: 13th August 2020

Remarks:

DRAWING: LOCATION MAP



HOUSING
DEVELOPMENT
CORPORATION
PLANNING AND DEVELOPMENT DEPARTMENT
3RD FLOOR, HDC BUILDING HULHUMALE'
REPUBLIC OF MALDIVES
TEL. +(960)3353535, FAX +(960)3358892
EMAIL : planning@hdc.com.mv



**HOUSING
DEVELOPMENT
CORPORATION**
PLANNING AND DEVELOPMENT DEPARTMENT
3RD FLOOR, HDC BUILDING HULHUMALE'
REPUBLIC OF MALDIVES
TEL. +(960)3353535, FAX +(960)3358892
EMAIL : planning@hdc.com.mv

PROJECT: RESIDENTIAL TOWER (N4-11)

Scale: N.T.S

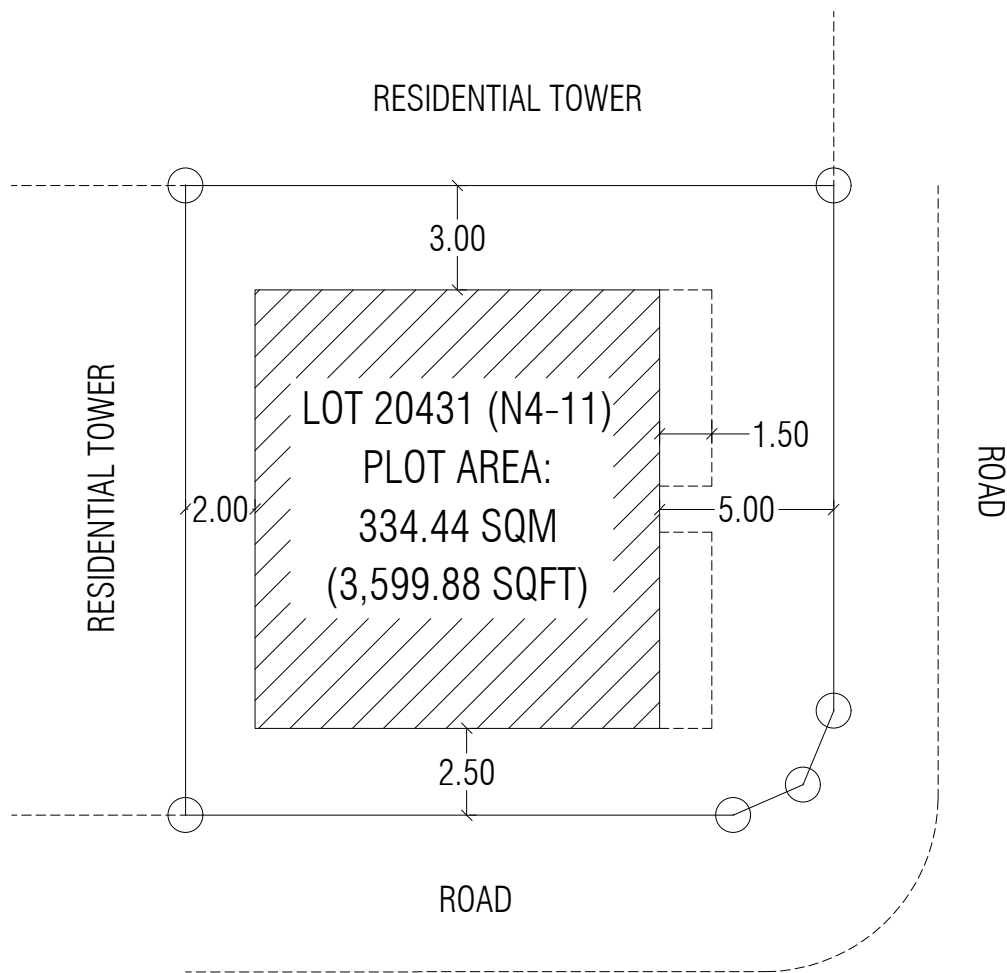
Drawn by: Razzan

Checked by:

Date: 13th August 2020

Remarks:

DRAWING: PLOT MAP



LOT NUMBER	PARCEL NUMBER	DESCRIPTION	LAND USE	PLOT AREA	FOOTPRINT	GFA	F.S.I.	SITE COVERAGE	MAX. HEIGHT	NUMBER OF UNITS
20431	N4-11	RESIDENTIAL TOWER	RESIDENTIAL	334.44 SQM	146.46 SQM	1,464.60 SQM	4.38	44%	10 FLOORS	16 UNITS
				3,599.88 SQFT	1,576.48 SQFT	15,764.81 SQFT			34.3M + 4M	



HOUSING DEVELOPMENT CORPORATION
 PLANNING AND DEVELOPMENT DEPARTMENT
 3RD FLOOR, HDC BUILDING HULHUMALE'
 REPUBLIC OF MALDIVES
 TEL. +(960)3353535, FAX +(960)3358892
 EMAIL : planning@hdc.com.mv

PROJECT: RESIDENTIAL TOWER (N4-11)

DRAWING: SETBACK PLAN

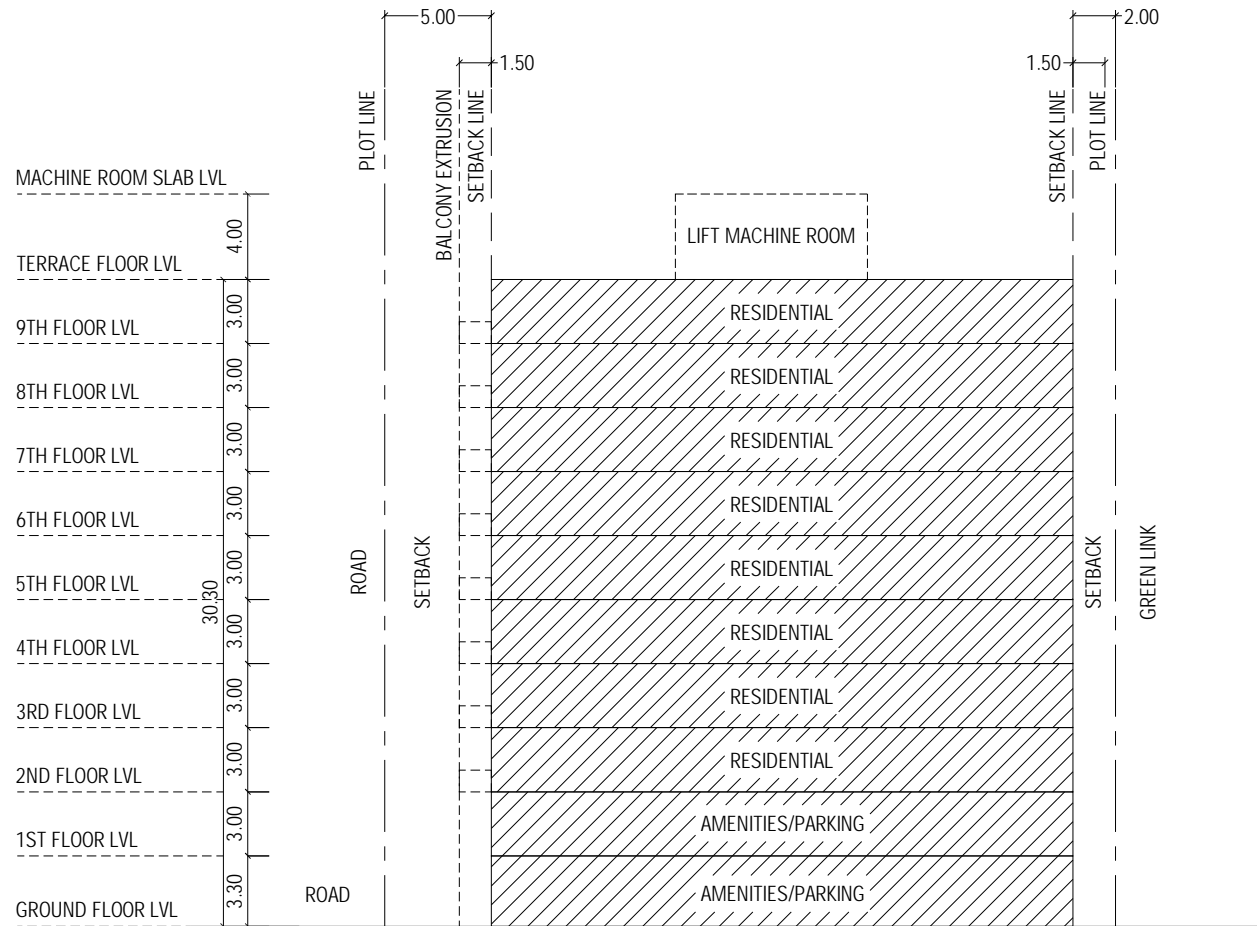
Scale: N.T.S

Drawn by: Razzan

Checked by:

Date: 13th August 2020

Remarks:



PROJECT: RESIDENTIAL TOWER (N4-11)

Scale: N.T.S

Drawn by: Razzan

Checked by:

Date: 13th August 2020

DRAWING: CONCEPTUAL SECTION

Remarks:



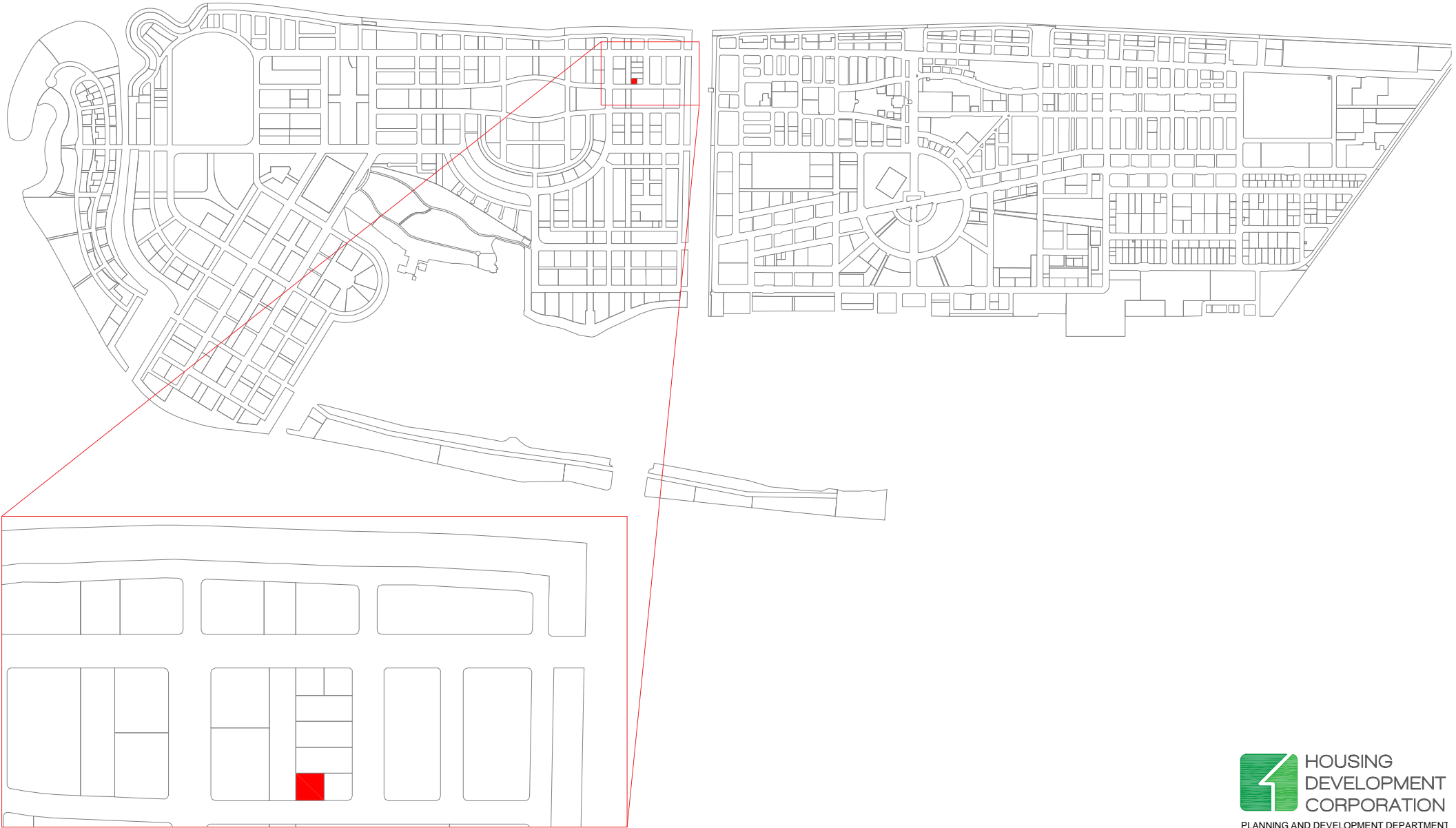
**HOUSING
DEVELOPMENT
CORPORATION**

PLANNING AND DEVELOPMENT DEPARTMENT
3RD FLOOR, HDC BUILDING HULHUMALE'
REPUBLIC OF MALDIVES
TEL. +(960)3353535, FAX +(960)3358892
EMAIL : planning@hdc.com.mv



PHASE 2

PHASE 1



PROJECT: RESIDENTIAL TOWER (N4-11)

Scale: N.T.S

Drawn by: Razzan

Checked by:

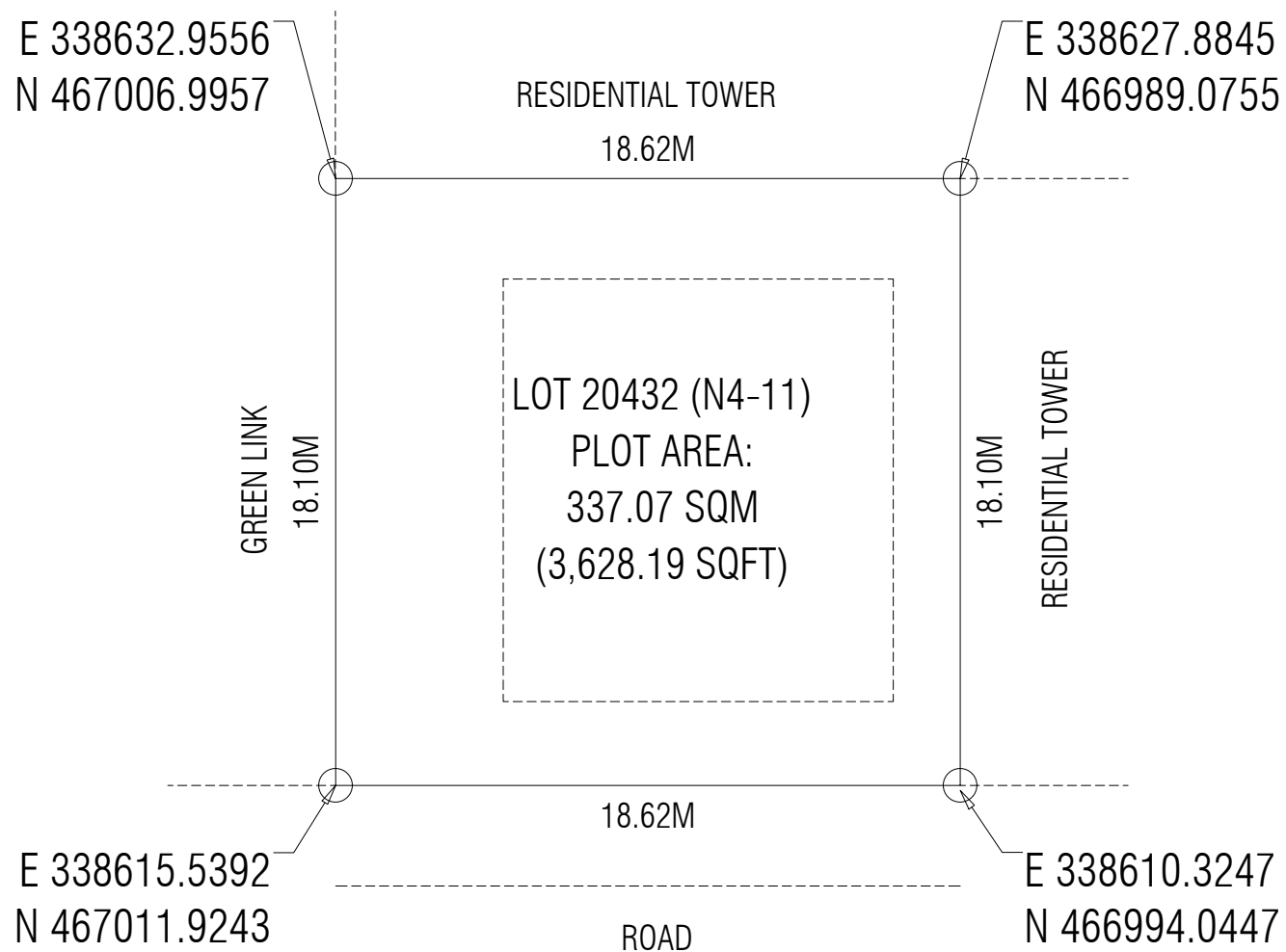
Date: 13th August 2020

Remarks:

DRAWING: LOCATION MAP



HOUSING
DEVELOPMENT
CORPORATION
PLANNING AND DEVELOPMENT DEPARTMENT
3RD FLOOR, HDC BUILDING HULHUMALE'
REPUBLIC OF MALDIVES
TEL. +(960)3353535, FAX +(960)3358892
EMAIL : planning@hdc.com.mv



PLANNING AND DEVELOPMENT DEPARTMENT
3RD FLOOR, HDC BUILDING HULHUMALE'
REPUBLIC OF MALDIVES
TEL. +(960)3353535, FAX +(960)3358892
EMAIL : planning@hdc.com.mv

PROJECT: RESIDENTIAL TOWER (N4-11)

Scale: N.T.S

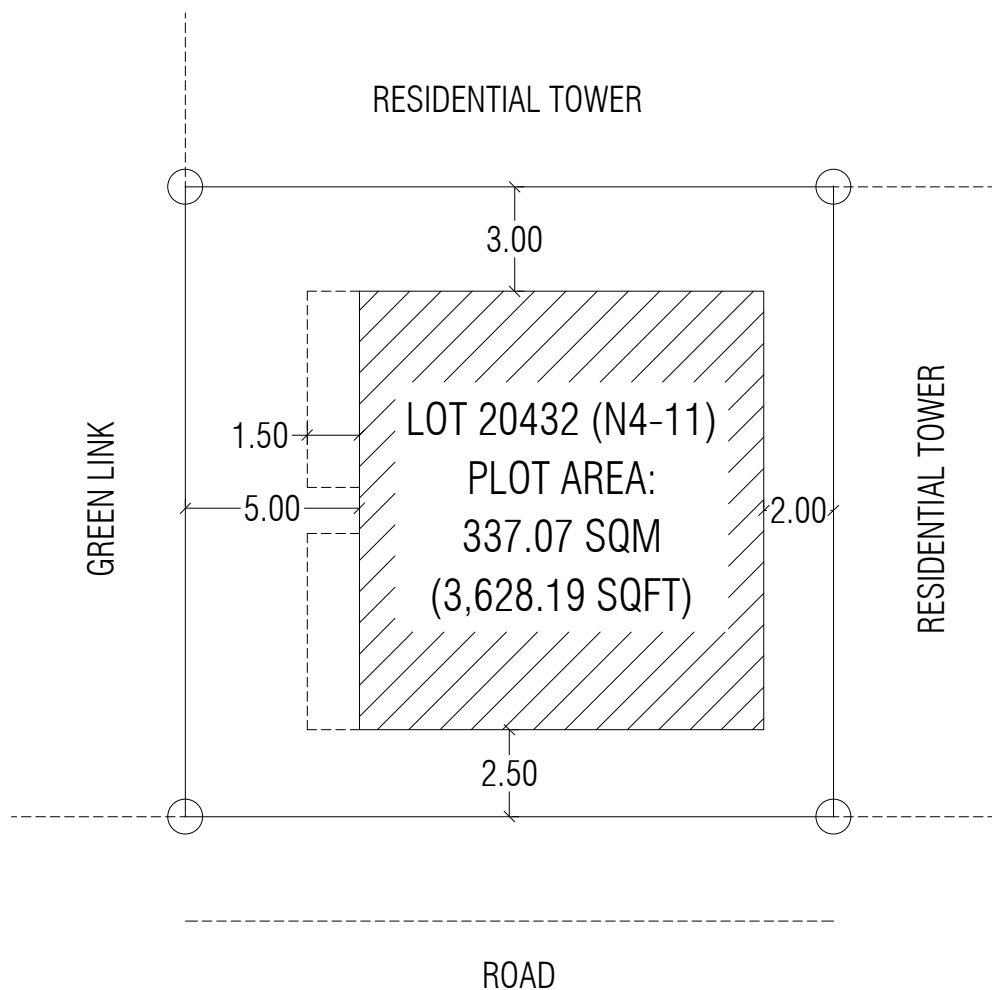
Drawn by: Razzan

Checked by:

Date: 13th August 2020

Remarks:

DRAWING: PLOT MAP



LOT NUMBER	PARCEL NUMBER	DESCRIPTION	LAND USE	PLOT AREA	FOOTPRINT	GFA	F.S.I.	SITE COVERAGE	MAX. HEIGHT	NUMBER OF UNITS
20432	N4-11	RESIDENTIAL TOWER	RESIDENTIAL	337.07 SQM	146.46 SQM	1,464.60 SQM	4.35	43%	10 FLOORS	16 UNITS
				3,628.19 SQFT	1,576.48 SQFT	15,764.81 SQFT			34.3M + 4M	



HOUSING DEVELOPMENT CORPORATION
 PLANNING AND DEVELOPMENT DEPARTMENT
 3RD FLOOR, HDC BUILDING HULHUMALE'
 REPUBLIC OF MALDIVES
 TEL. +(960)3353535, FAX +(960)3358892
 EMAIL : planning@hdc.com.mv

PROJECT: RESIDENTIAL TOWER (N4-11)

DRAWING: SETBACK PLAN

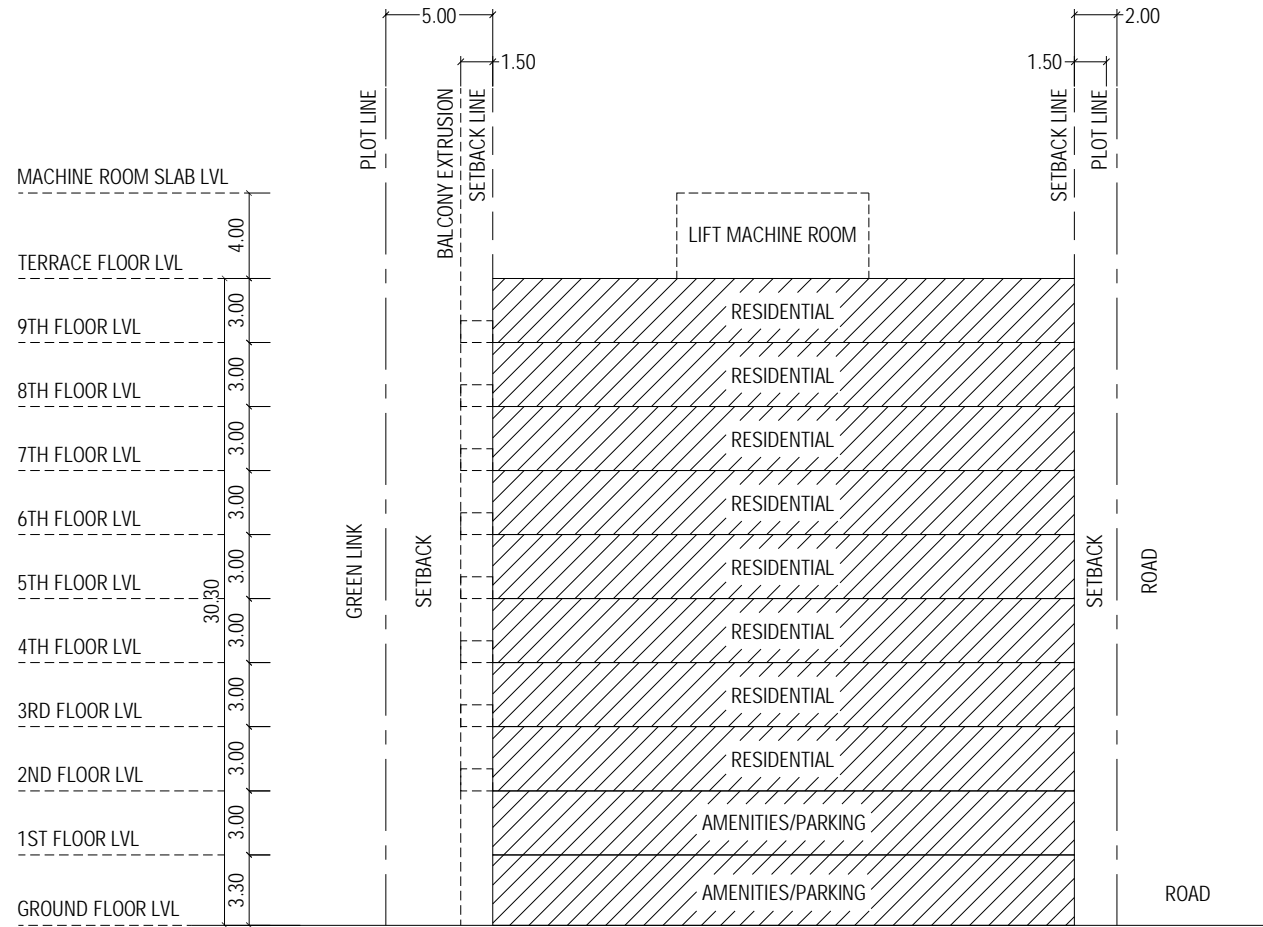
Scale: N.T.S

Drawn by: Razzan

Checked by:

Date: 13th August 2020

Remarks:



PROJECT: RESIDENTIAL TOWER (N4-11)

Scale: N.T.S

Drawn by: Razzan

Checked by:

Date: 13th August 2020

DRAWING: CONCEPTUAL SECTION

Remarks:



HOUSING
DEVELOPMENT
CORPORATION
PLANNING AND DEVELOPMENT DEPARTMENT
3RD FLOOR, HDC BUILDING HULHUMALE'
REPUBLIC OF MALDIVES
TEL. +(960)3353535, FAX +(960)3358892
EMAIL : planning@hdc.com.mv