

HDC (161)-EM/IU/2020/144

Addendum 2

DEVELOPMENT AND OPERATION OF AN OFFICE BUILDING IN HULHUMALÉ LOT 11629 (N2-31A)

Reference is made to the Request for Proposal (RFP) announced under the announcement number HDC (161)-EM/IU/2020/112 dated 28th June 2020 for the 'Development and Operation of an Office Building in Hulhumalé Lot 11629 (N2-31A)'.

Please be informed that the Annex 01 of the referred Request for Proposal (RFP) has been amended. Below please find the amended details and the attachment uploaded with this announcement for reference

- Annex 01- Drawings (Location map/Plot map)



Plot Number	Usage	Plot Area	Maximum Height	Maximum GFA
11629 (N2-31a)	Office Building	4,698.44 Sqft.	7 Floors/ 26.4m	23,088.15 Sqft

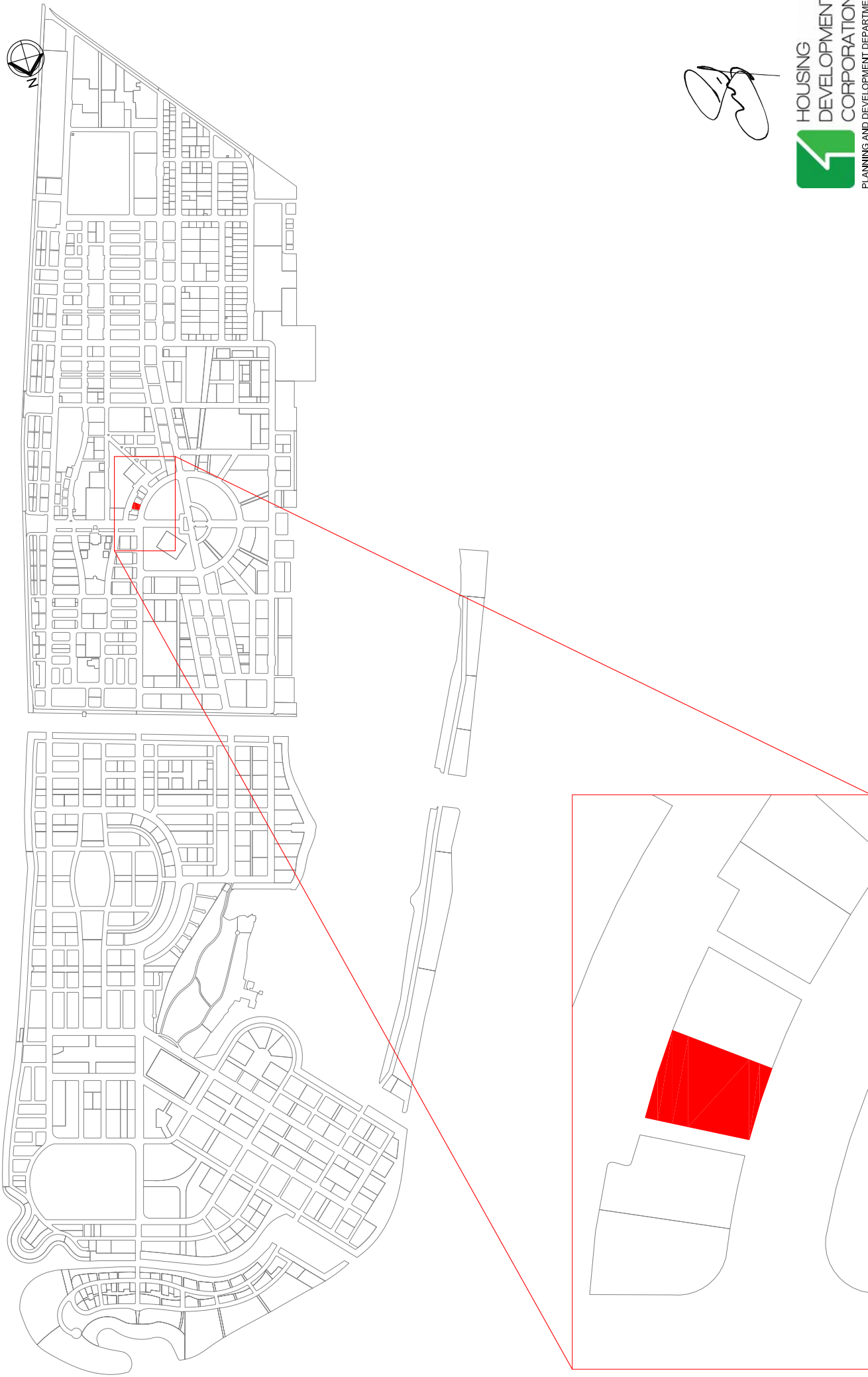
Hence, kindly refer to the amended Annex 01 uploaded with the announcement.

Additional information regarding the submission of proposals will be available on the Request for Proposal (RFP) uploaded on HDC website www.hdc.com.mv and www.properties.hdc.com.mv.

Real Estate Management,
Housing Development Corporation Ltd.
HDC Building, Ground Floor
Hulhumalé, Maldives
E-mail: sales@hdc.com.mv
3355134, 3355259, 3355368

17th August 2020



PLANNING AND DEVELOPMENT DEPARTMENT
 3RD FLOOR, HDC BUILDING HULHUMALE
 REPUBLIC OF MALDIVES
 TEL: +960 3353535, FAX: +960 3356892
 EMAIL: planning@hdc.com.mv

DRAWING: LOCATION MAP

PROJECT: LOT 11629 (N2-31a)

Scale: N.T.S

Drawn by: Jiljan

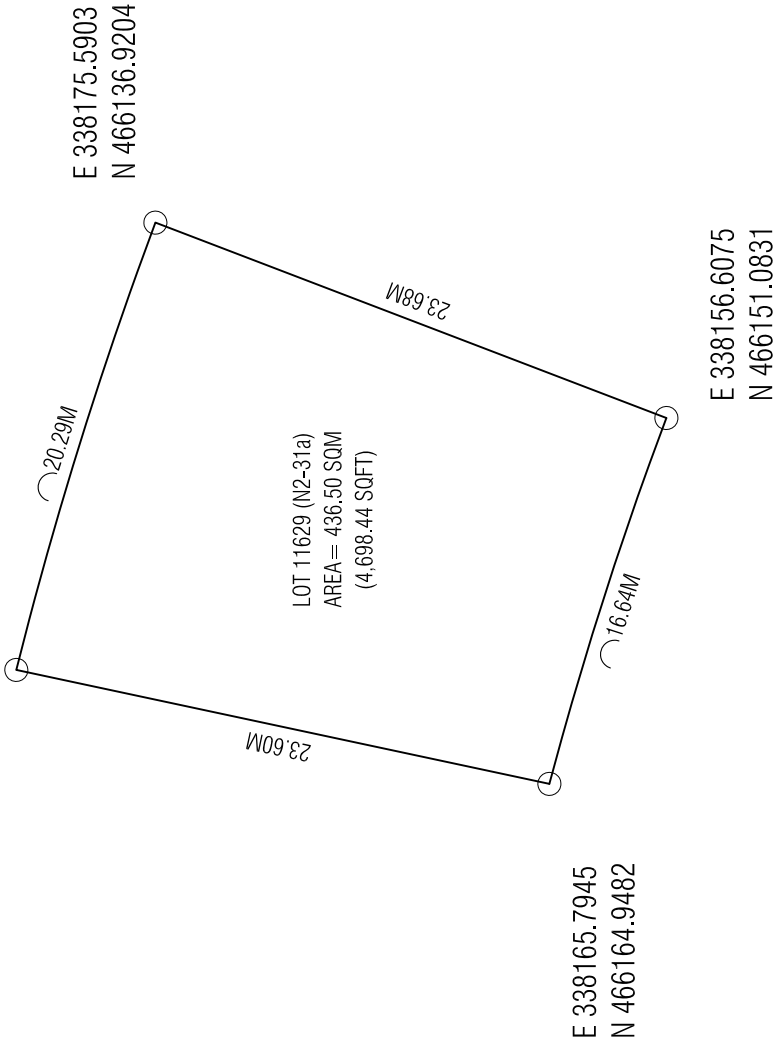
Checked by:

Date: 11th August 2020

Remarks:

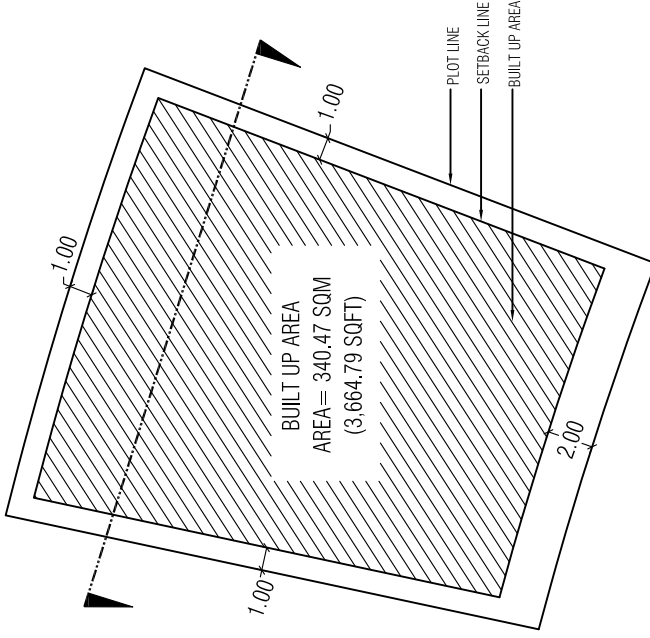


E 338186.6575
N 466153.9158



E 338165.7945
N 466164.9482

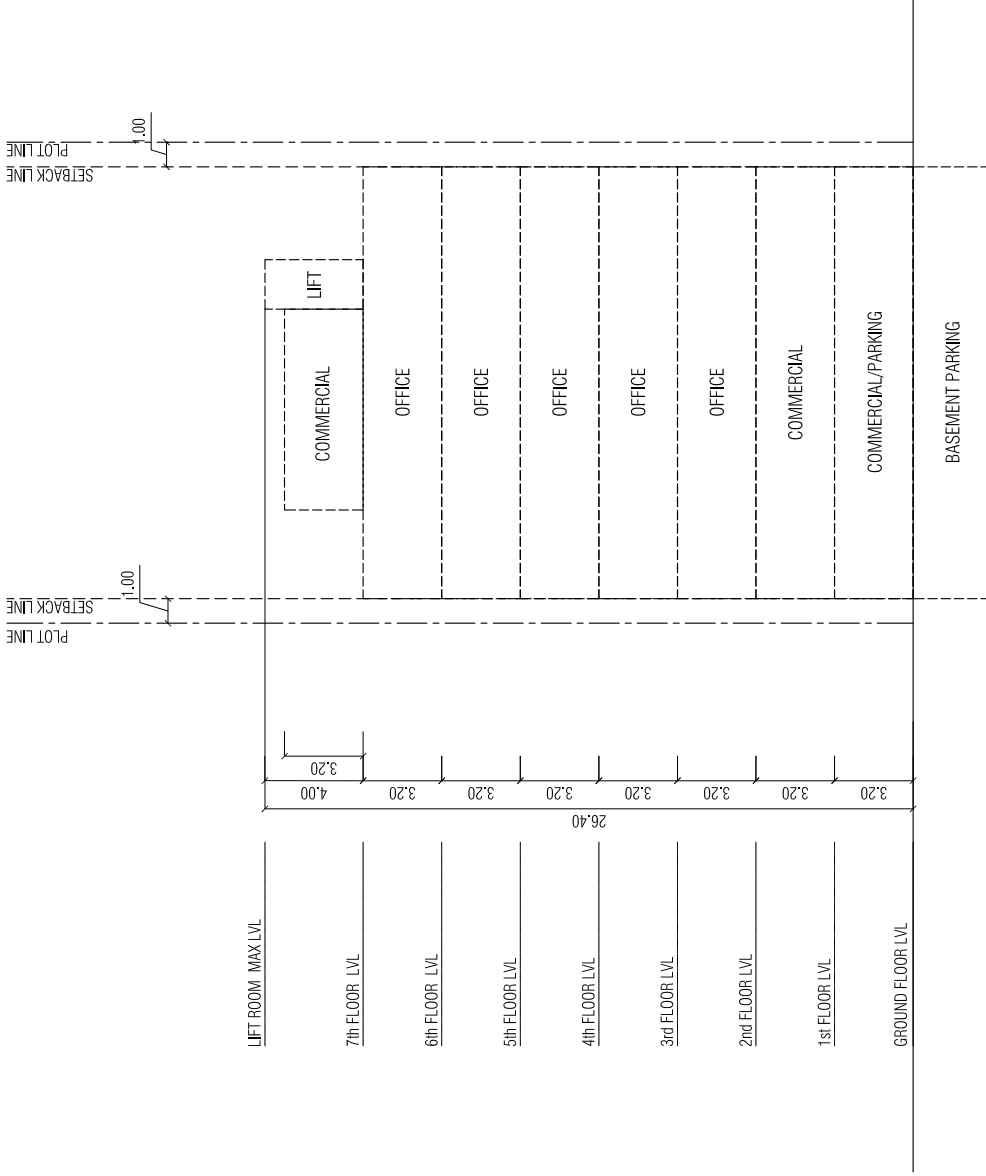
E 338156.6075
N 466151.0831



Lot Number	Parcel Number	Description	Land Use	Plot Area	Foot Print	Gross Floor Area (G.F.A)	Plot Ratio (F.S.I)	Site Coverage	Max Height / Floors
11629	N2-31a	Office Building (N2-31a)	Mix Office	436.50 SQM 4,698.44 SQFT	340.47 SQM 3,664.79 SQFT	2,144.96 SQM 23,088.15 SQFT	4.91	78%	7 Floors / 26.4m 22.4m bldg + 4m Lift Machine Room

PROJECT: LOT 11629 (N2-31a) DRAWING: SETBACK PLAN

Scale: N.T.S Checked by: Jilan Date: 11th August 2020 Remarks:




HOUSING DEVELOPMENT CORPORATION
 PLANNING AND DEVELOPMENT DEPARTMENT
 3RD FLOOR, HDC BUILDING HULHUMALE,
 REPUBLIC OF MALDIVES
 TEL. +(960)3353535; FAX +(960)3358892
 EMAIL : planning@hdc.com.mv

PROJECT: LOT 11629 (N2-31a)

Scale: N.T.S

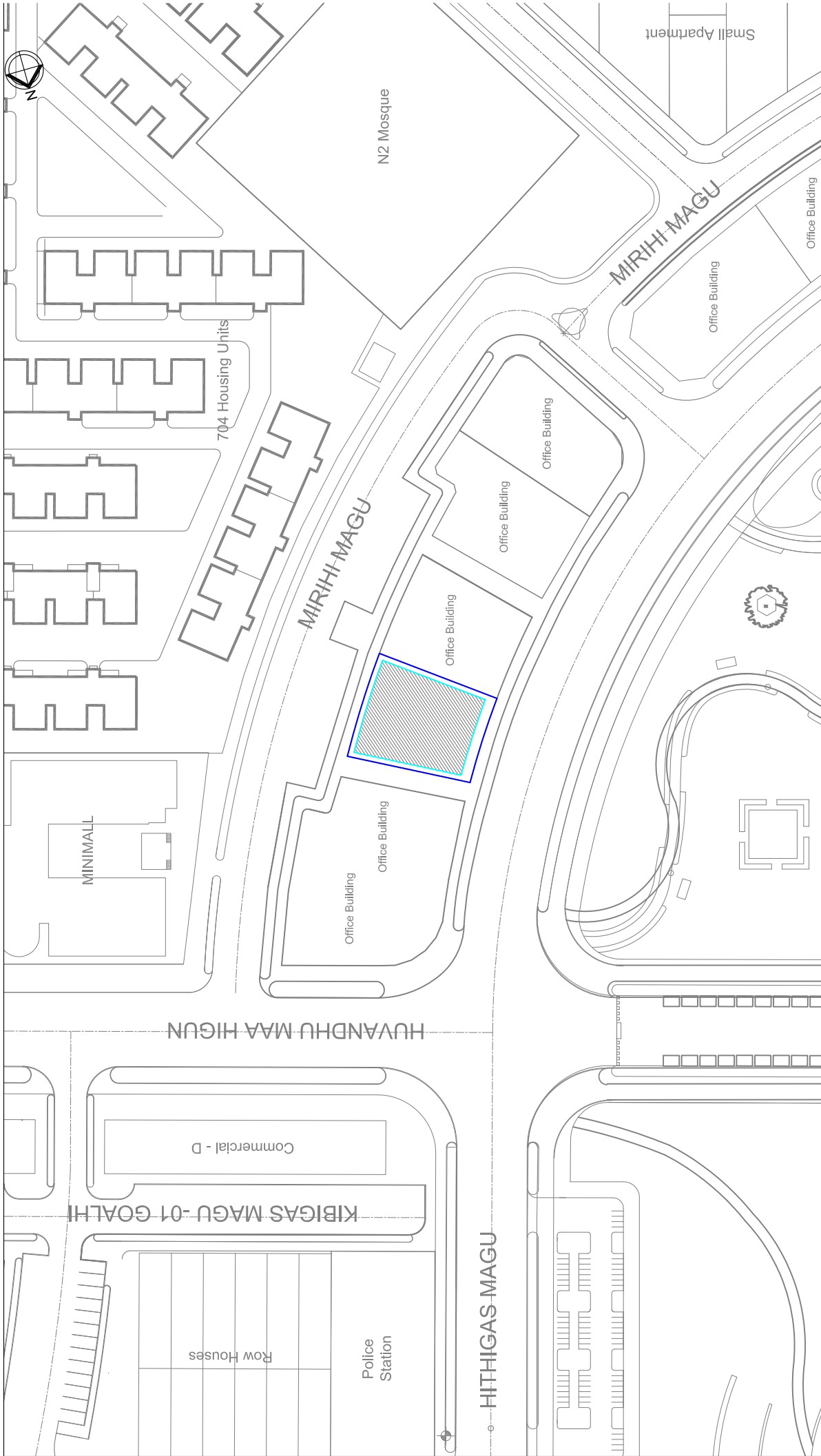
Drawn by: Jijian

Checked by:

Date: 11th August 2020

Remarks:

DRAWING: CONCEPTUAL SECTION



HOUSING DEVELOPMENT CORPORATION
 PLANNING AND DEVELOPMENT DEPARTMENT
 3RD FLOOR, HDC BUILDING HULHUMALE,
 REPUBLIC OF MALDIVES
 TEL. +(960)3353535; FAX +(960)3358892
 EMAIL : planning@hdc.mv



DRAWING: SITE CONTEXT

PROJECT: LOT 11629 (N2-31a)

Scale: N.T.S

Drawn by: Jilan

Checked by:

Date: 11th August 2020

Remarks: